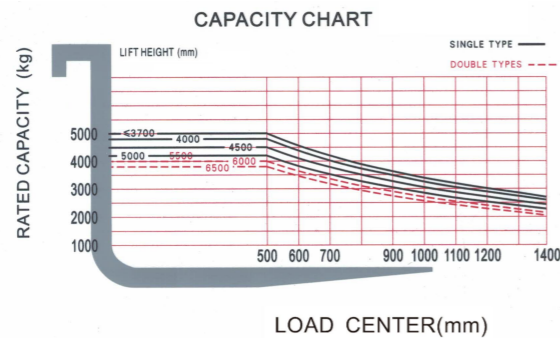


ELECTRIC FORKLIFT PARAMETERS TABLE



Projects		Unit	SOCMA			
Character	Brand	—	SOCMA			
	Model	—	FB70S	FB80S	FB100S	FB120S
	Power mode	—	Lithium Iron Phosphate battery			
	Driving mode	—	Seat	Seat	Seat	Seat
	Load capacity	Q (Kg)	7000	8000	10000	12000
	Load center	C (mm)	600	600	600	600
	Max.lifting height	h3 (mm)	3000	3000	3000	3000
Weight	Self-weight	kg	9300	9400	12500	13500
	Battery weight	kg	735	735	950	950
Size	Front overhang	x (mm)	595	595	718	738
	Wheelbase	y (mm)	2350	2400	2800	3000
	Mast tilting angle (fwd/bwd)	α/β (°)	6/12	6/12	6/12	6/12
	Mast height(fork lowered)	h1 (mm)	2500	2500	2850	2850
	Free lifting height	h2 (mm)	155	155	180	180
	Mast height(fork raised)	h4 (mm)	4400	4400	4550	4550
	Overhead guard height	h6 (mm)	2480	2480	2560	2560
	Driver's seat height	mm	1350	1350	1400	1400
	Overall length(without fork) (to backrest)	(mm)	3750	3800	4260	4460
	Overall width (to backrest)	b1 (mm)	2000	2000	2160	2200
	Fork size:thickness*width*length	mm	1220x150x65	1220x150x65	1220x150x80	220x150x80
	Min. ground clearance (mast)	m1 (mm)	200	200	245	245
	Min. ground clearance (middle of chassis)	mm	210	210	255	255
Min. turning radius	Wa (mm)	3470	3480	3900	4200	
Tires	Tire type	-	pneumatic tire	pneumatic tire	pneumatic tire	pneumatic tire
	Tire number (X=driving tire)	-	4x12	4x/2	4x/2	4x/2
	Front tire	-	8.25-15-14PR	8.25-15-14PR	9.00-20-14PR	0.00-20-18PR
	Rear tire	-	8.25-15-14PR	8.25-15-14PR	9.00-20-14PR	0.00-20-18PR
Performance	Travelling speed (loaded/unloaded)	Km/h	23/24	23/24	23/24	22/23
	Lifting speed (loaded/unloaded)	mm/s	460/480	440/480	340/360	320/360
	Max.drawbar pull(load/unloaded)	kN	23/20	23/20	20/20	20/20
	Max.gradeability (loaded/unloaded)	%	18/20	18/20	18/20	18/20
System	power unit	-	100G1	100G1	100G1	100G1
	power unit cooling type	-	liquid cooling	liquid cooling	liquid cooling	liquid cooling
	Travelling motor power	KW	50AC	50AC	50AC	50AC
	Working motor power	KW	30.0ACx2	30.0ACx2	30.0ACx2	30.0ACx2
	Battery (voltage/capacity)	V/Ah	345/230	345/230	345/280	345/280
Standard charger specifications(output)	V/A	345.5V80A	345.5V80A	345.5V170A	345.5V170A	

Note: The above data are subject to change without prior notice



Address: Fujian Quanzhou Taiwanese Investment Area
 International Sales Tel: 0086-592-5650603
 Domestic Sales Tel: 0086-595-27393198
 Email: overseas@socmachinery.com
 Website: http://www.socmachinery.com

@ SOCMA Material Handling
 @ SOCMA GROUP



**SOCMA POWER
LIFT YOUR BUSINESS**

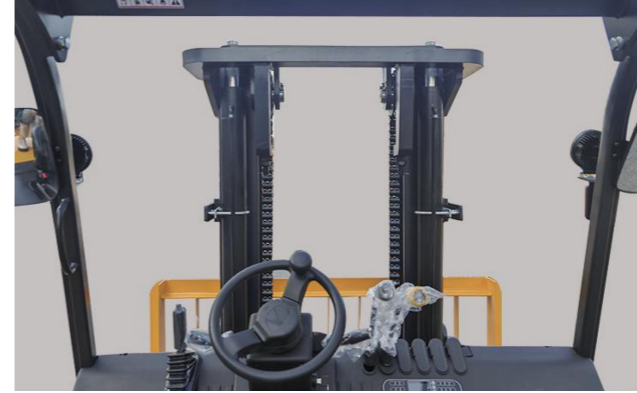
FUJIAN SOUTHCHINA HEAVY MACHINERY MANUFACTURE CO., LTD

<http://www.socmachinery.com>

FEATURES OF SOCMA ELECTRIC FORKLIFTS



Wide-view mast, safer operation



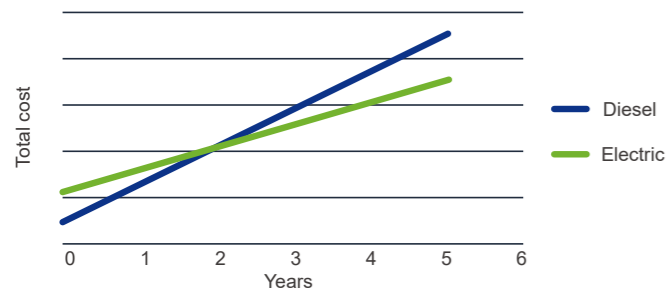
With VCU and independent control box



Speed grading, ESP 3-speed flexible



Large capacity lithium battery(max.81.6KWh)



ECONOMY

- ◆ Low cost of use: The cost of electricity is about 20~30% of the fuel consumption of traditional construction machinery.
- ◆ Low maintenance cost: fewer wearing parts, low failure rate, and simple maintenance; there is no need for regular maintenance of the diesel engine, replacement of oil, three filters, etc., and the maintenance cost is reduced by more than 50% compared with traditional diesel engineering machinery.

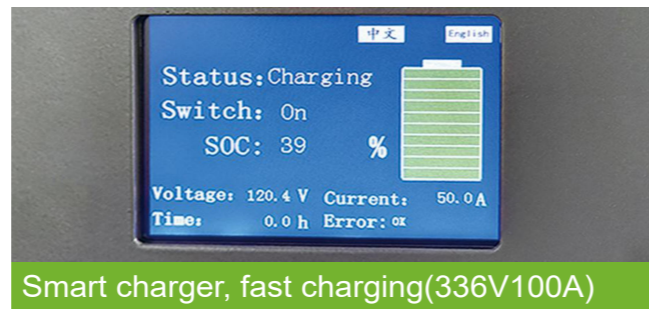
Comfortable driving experience



Large-angle flip hood, easy maintenance



Special-shaped pipe overhead guard



Smart charger, fast charging(336V100A)

The instrument panel is fully covered



Full-vehicle liquid cooling system

