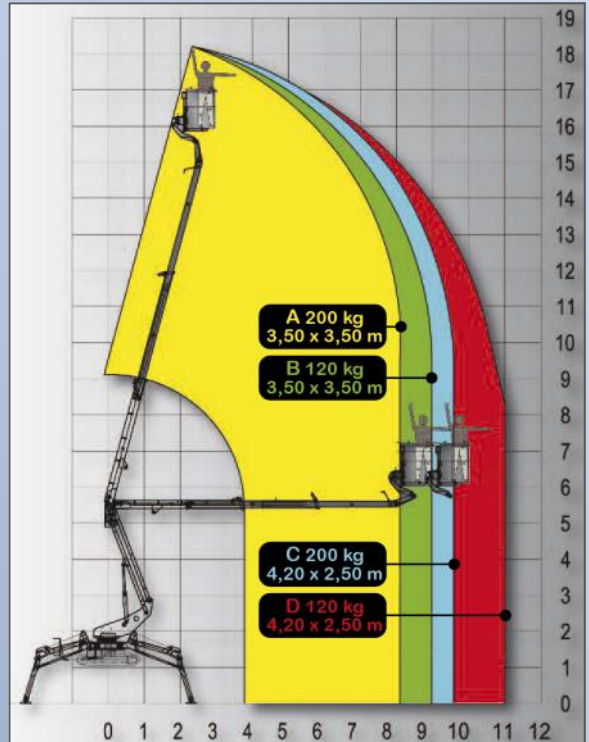


EASYLIFT R-190

18.5M NARROW TRACKED SPIDER LIFT



	Working Height 18.5 Metres
	Outreach 11 Metres
	Power Bi-Fuel
	Gross Vehicle Weight 2800kg
	Stowed Height 1.98 Metres
	Stowed Width 0.89 Metres
	Platform Capacity 200kg
	Platform Capacity 2 Persons



DESCRIPTION

The Ragno R-190 is a narrow spider access platform with rough terrain, non-marking tracks. Suitable over diverse terrain, the R190 can be used indoors and out for work at height in difficult access scenarios; with a width of only 0.89 metres this powered access platform can fit through a single width doorway. Bi-fuel powered, the spider lift R190 can be used in either diesel or mains power mode.

FEATURES

- Diesel Engine
- Cage Rotation 90° + 90°
- Proportional Hydraulic Controls
- 360° Non-Continuous Turret Rotation
- 30% Gradeability

SPECIFICATIONS

Power
Bi Fuel - Mains/Diesel

Cage Dimensions
1.4 x 0.7 Metres

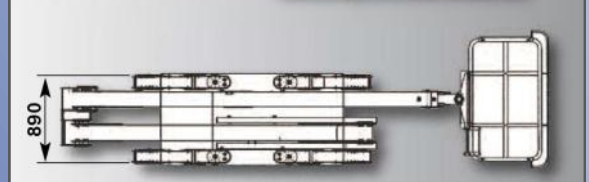
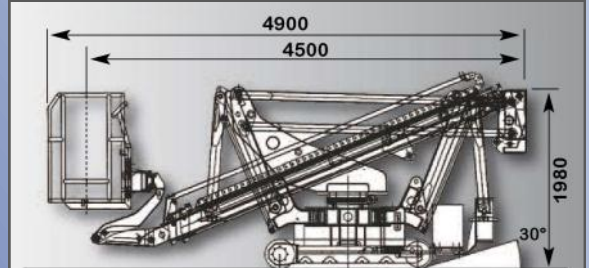
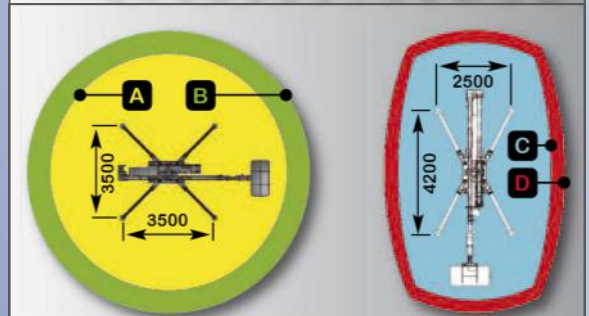
Length
4.9 Metres

Length (basket removed)
4.5 Metres

Outrigger Spread
Variable Jacking (see diagram)

IPAF TRAINING

Ragno R190 operators should always hold a current PAL Card for the 1b IPAF Category as proof of training.



HIRE | SALES | SERVICE | TRAINING

Call: **01279 501501**
 Email: **info@rapidplatforms.co.uk**
 Visit: **www.rapidplatforms.co.uk**

Rapid Platforms Ltd, London Road, Spellbrook, Bishop's Stortford, Herts, CM23 4AU

