



Grass & Ground Protection

Grass & Ground Protection

Making Accessibility Happen

TrackGard and Pro-Floor is The Nature Company's portfolio for Grass and Ground protection. We provide event flooring and grass protection services for any scale of events. Whether deployed for a few days or over the course of weeks, we are the ideal solution for a speedy set-up and tear down.

Event Flooring: Our superior and affordable range of portable flooring is lightweight and robust, able to withstand the weight of large crowds while protecting underneath surfaces. Perfect for event and marquee flooring.

Grass Protection: Specialising in turf protection, our portfolio provides state-of-the-art outdoor flooring solutions that safeguard valuable grass and turf at stadiums and sporting arenas.

Portable Roadway: Our versatile and portable roadway systems will stand up to extreme loads, making it the ideal temporary access roadway for stage construction, maintenance and vehicle movement over sensitive surfaces.

Heavy Duty Platform: As a portable roadway, our portfolio is tough enough to withstand the heavy loading of trucks, earth-moving equipment, machinery and military vehicles while providing effective grass protection. Apart from heavy loading applications, our durable flooring can accommodate uneven terrains and accessibility for personal mobility devices.

Military Vehicle Display



A total of 6,350m² Pro-Floor® EF and TrackGard® were used at the 2019 Grand Prix.



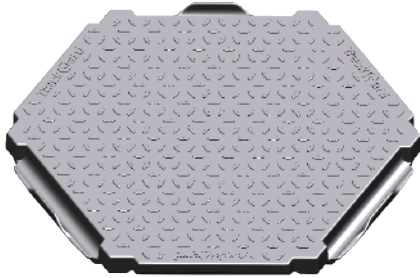
TrackGard®

TrackGard® is engineered to distribute weight and contour over ground surface to provide a surface that delivers an optimal combination of strength and flexibility to support heavy weight and moving loads.



Applications: Construction Sites, Temporary Access Road, Equipment Platforms, Parade/Stadium/Event Flooring, Turf Protection, Machinery Exhibition Floors, Tent & Storage Area Floors, Military, Civil Defense/Police Command Centres, Marquees, Concerts

Product Specifications:



Material		PP/HDPE
Weight		~2.8kg
Surface Area		~0.27 m ² per module, ~3.7 modules per m ²
Compressive strength		60 tonnes/module
Max Load	Incompressible	23 tonnes/wheel
	Hard (CI > 500)	6 tonnes/wheel
	Soft (CI > 300)	4 tonnes/wheel
Assembly Rate		~100m ² /person/hour
Slip Resistance		(SS 485:2001)
Wet Pendulum Testing		Classification X
Dry Friction Testing		Classification F

Pro-Floor® EF

Versatile and light-weight flooring. Rolls up for storage and handling. Protects grass and other sensitive surfaces by reducing abrasion and wear, while providing slip resistance. The porosity of Pro-Floor provides air, light and water transmission for the turf it protects.



Applications: Grass protection, Concerts, Dance floors, Stadium Covers, Pathways, Camping, Exhibitions, Marquee floors

Product Specifications:



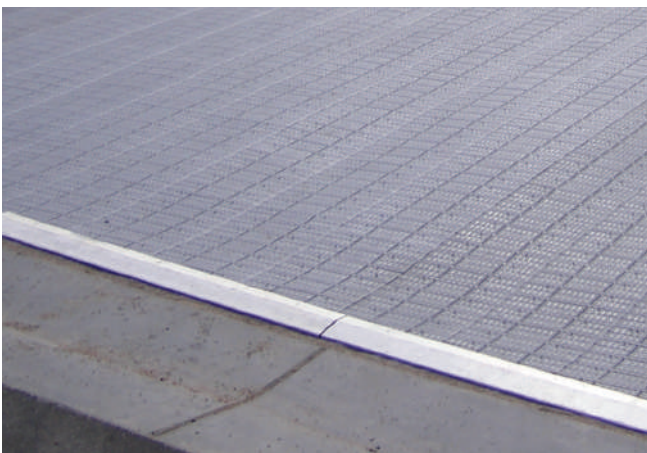
Material	Recyclable polypropylene copolymer
Weight	~110gm per tread, 4.3kg per m ²
UV Stabilised	Treated against excessive colour fading and deterioration
Fire Rating	NFP92-501 Epiradiateur Test M4, AS/NZS 1530.3-1999: Ignitibility=15, Spread of Flame=2, Heat Evolved=2, Smoke Developed=4
Load Factor	Static 29 tonnes/m ² on firm surface, 42m ² /cu.m. in rolls, 56m ² /cu.m. flat sections
Cleaning	May be swept, mopped, scrubbed and pressure-washed. Resistant to most common detergents and cleaning fluids
Drainage	Pro-Floor® EF has a moisture containment canopy to prevent burns from severe sunlight. Pro-Floor® EF contains in-built grooves and slots to allow water drainage away from the surface reducing the risk of slipping



TrackGard® Steel Ramp for Heavy Vehicles



TrackGard® Aluminium Ramp for Pedestrians and Light Vehicles



Pro Floor® Steel Ramp for Pedestrians and Light Vehicles

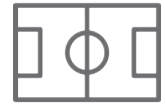
Applications:



Access Roads



Construction Sites



Sports Fields



Event Flooring



Beach Access



Race Courses

Features and Benefits

- The perfect solution for portable flooring, temporary roads and ground protection
- Has a robust construction, ideal for large vehicles and equipment
- Made from UV-stabilised thermoplastic for industry-grade durability
- Adjacent modules support each other on all sides, providing flexibility and stability
- Easily installed and removed by unskilled labour
- Does not require any tools or additional pieces to secure modules to each other
- Modules are completely interchangeable and expandable
- Stores compactly on pallets and rolls for easy transport and redeployment

Note: The information provided in this brochure is based on current knowledge and experience and does not infer any legally binding assurance or warranty, expressed or implied. Intending purchasers should verify whether any changes to specifications or applications or otherwise have been made since the issue of this literature. Environmentally-friendly recycled materials are used in product manufacture wherever possible. Physical product properties including colour may differ due to source of raw materials used. Colour may also fade due to UV exposure. All components of the product are designed for specific application, design calculations and any variation and/or deviation therefrom shall be the responsibility of the specifier and/or user.