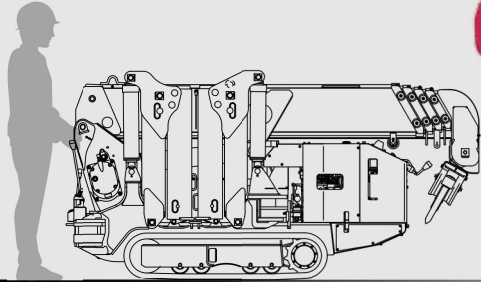


URW295C

URW295C is narrow enough to allow access through standard size single doorway, but with 2.93t of lifting power.



Max.
2.93t
x1.4m
Lifting capacity

Max.
8.8m
Hook height (Approx.)
(Above ground level)

with Safe load indicator (Option)



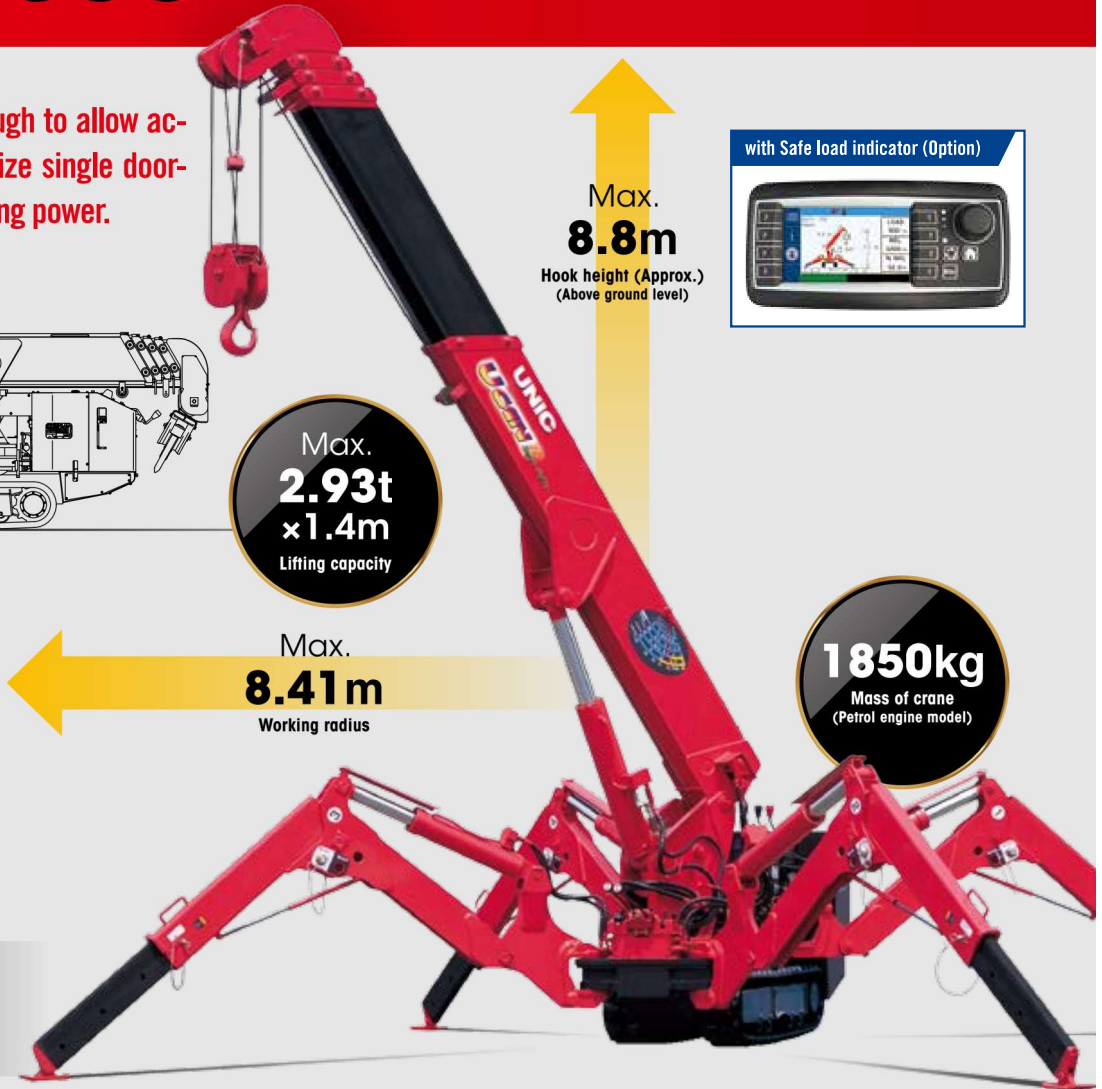
Max.
8.41m
Working radius

1850kg
Mass of crane
(Petrol engine model)



Radio remote control

Photo: Standard model



SPECIFICATIONS [with Electric power unit]

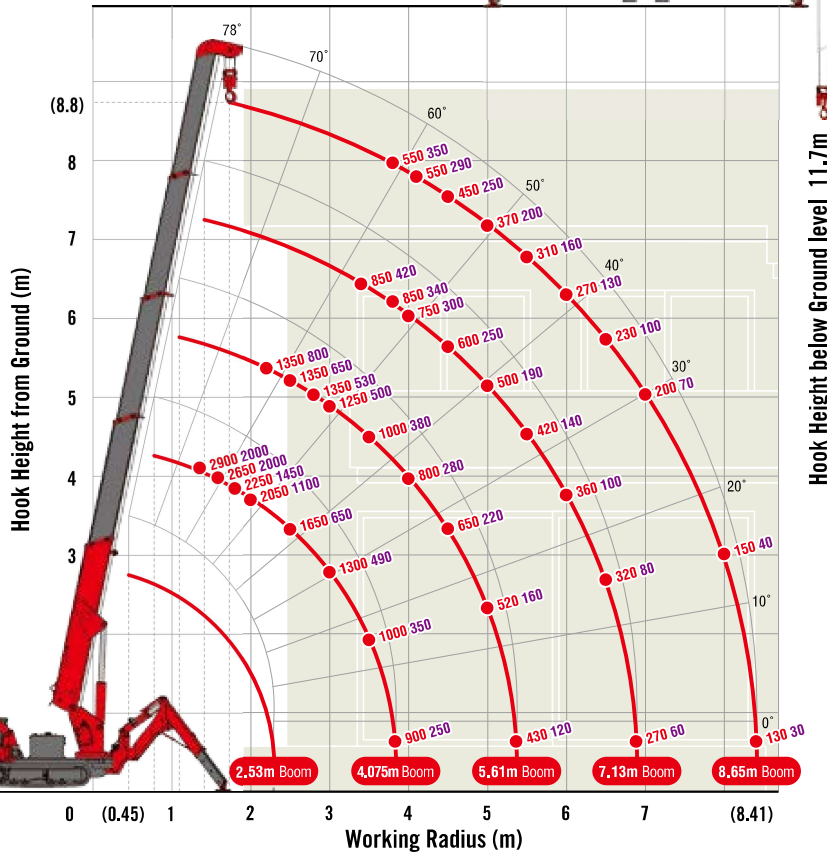
Crane model	URW295CP2		URW295C4	
	A (Standard)	E-1(Safe load indicator)	A (Standard)	E-1(Safe load indicator)
Lifting capacity	Max. 2.93t at 1.4m			
Working radius	Min. 0.45m, Max. 8.41m			
Hook height (Approx.)	Max. 8.8m			
	Max. 11.7m (with 4-part line)			
Boom	Length		Min. 2.53m to Max. 8.65m	
	Extending speed		Min. 2.53m to Max. 8.65m Min. 2.70m to Max. 8.65m	
	Raising angle / speed		6.12m / 22 sec. 5.95m / 21 sec. [50Hz] 6.12m / 34 sec. [60Hz] 6.12m / 28 sec. [50Hz] 5.95m / 33 sec. [60Hz] 5.95m / 28 sec.	
Structure	0° to 78° / 11 sec. [50Hz] 0° to 78° / 18 sec. [60Hz] 0° to 78° / 15 sec.		0° to 78° / 12 sec. [50Hz] 0° to 78° / 18 sec. [60Hz] 0° to 78° / 15 sec.	
	5-section box beam type telescoping boom			
Winch	Single line speed			
	40 m/min (at 4th layer) [50Hz] 22 m/min (at 4th layer) [60Hz] 27 m/min (at 4th layer)			
	Hook speed			
	10 m/min (at 4th layer with 4-part line) [50Hz] 5.5 m/min (at 4th layer with 4-part line) [60Hz] 6.7 m/min (at 4th layer with 4-part line)			
Slewing	Wire rope			
	Construction : IWRC 6 x WS(26) GRADE B / Diameter x Length : 8mm x 54m / Breaking strength : 42.4kN [4320 kgf]			
	Hook block			
Outriggers	2.9t capacity, 2 sheaves with safety latch			
	Range			
Hydraulic Pump	360° continuous rotation on a ball bearing race			
	Speed			
Hydraulic oil tank capacity	1.5 rpm			
	2-section (with damper) for bend and 5-section extension(front) / 4-section extension(rear), Double acting hydraulic cylinders with pilot-operated check valves, direct pushing type (Directly connected with hydraulic automatic lock device)			
Safety devices	Type			
	Variable delivery piston pump			
[with Safe load indicator]	Rated pressure			
	For crawling: 21.6 MPa [220 kgf/cm ²] For crane: 20.6 MPa [210 kgf/cm ²]			
Pressure relief valve for hydraulic circuit / Counterbalance valves for boom raising and boom telescoping cylinders / Double pilot-operated check valves for outrigger cylinders / Boom angle indicator with load indicator / Hook safety latch / Automatic mechanical brake for winch / Automatic stop for overwinding / Overwinding alarm / Emergency stop button / Inter-lock device of crane and crawling levers / Level / Slewing restriction limit switch / Turn over prevention device* / Load meter* / Safe load indicator / Inter-lock device of crane and outriggers / Outrigger ground contact detector / Three colored lamp / Headlight				

* Only for standard model

MINI CRAWLER CRANE

WORKING RANGE & NET RATED LOADS (kg)

Outrigger ● Max-extended ● NOT max-extended



with Electric power unit (Option)



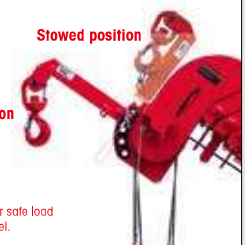
Rated power	3.7kW (3-phase 4 poles)
Voltage	AC 200V or 400V (50Hz / 60Hz)

*No cable included.

Searcher hook assembly (Option)

Stowed position

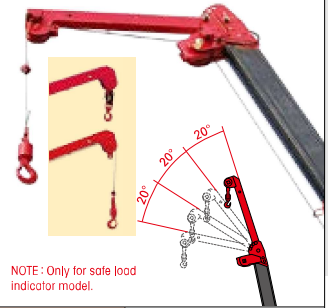
In operation



NOTE: Only for safe load indicator model.

Length	500mm
Lifting capacity	Max. 300kg
Tilt angles	0°, 20°, 40°, 60°

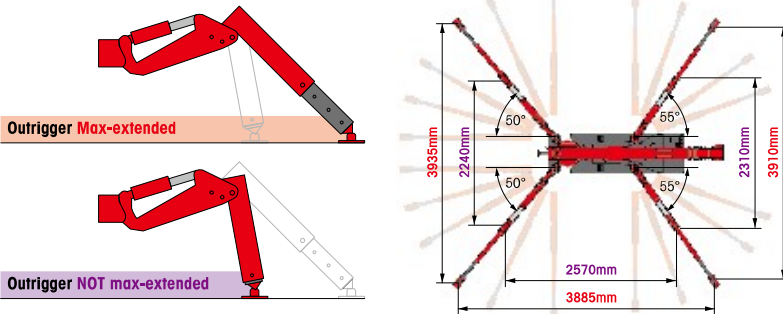
Fly jib assembly (Option)



NOTE: Only for safe load indicator model.

Length	1.5m
Lifting capacity	Max. 710kg
Tilt angles	0°, 20°, 40°, 60°

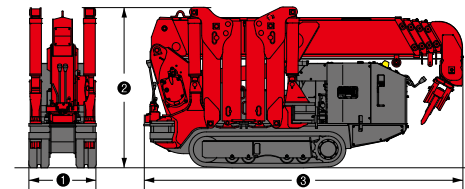
OUTRIGGER POSITIONS



CRAWLING GEAR [with Electric power unit]

Crane model	URW295CP2	URW295C4
Crawling speed	0~2.3 km/h, forward / backward [AC200V 50Hz] 0~1.2 km/h [AC200V 60Hz] 0~1.4 km/h [AC400V 50Hz] 0~1.1 km/h [AC400V 60Hz] 0~1.3 km/h	0~2 km/h, forward / backward [AC200V 50Hz] 0~1.2 km/h [AC200V 60Hz] 0~1.4 km/h [AC400V 50Hz] 0~1.1 km/h [AC400V 60Hz] 0~1.3 km/h
Hill climbing ability	20°	20°
Tread length × width	1050mm × 180mm	1050mm × 180mm
Ground contact pressure	48.0 kPa (0.49 kgf/cm ²) 51.4 kPa (0.52 kgf/cm ²)	49.8 kPa (0.51 kgf/cm ²) 53.0 kPa (0.54 kgf/cm ²)
Engine manufacturer / model	Mitsubishi / GB400LE	Kubota / Z4B2-E4B
Displacement	391cc	479cc
Maximum output	6.6kW(9PS) / 1800 rpm, Rated output	7.2kW(9.8PS) / 2600 rpm, Rated output
Fuel	Petrol	Diesel
Fuel tank capacity	6 liters	10 liters
Steering	Hydraulic drive independent of left / right	Hydraulic drive independent of left / right

DIMENSIONS [with Electric power unit]



Crane model	URW295CP2	URW295C4
① Total width	600mm	
② Total height	1375mm [1430mm]	1380mm [1450mm]
③ Total length	2690mm [2730mm]	2730mm [2900mm]
Mass of crane	1850kg [1980kg]	1920kg [2040kg]