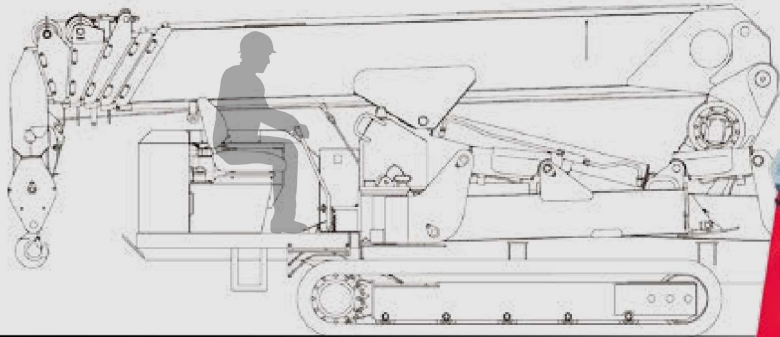


URW706C

URW706C features maximum hook height of 19.5m with its six section hydraulic boom.



with Safe load indicator (Option)



Max.
19.5m
Hook height (Approx.)
(Above ground level)

Max.
18.6m
Working radius

Max.
6.05t
x3.0m
Lifting capacity

7990kg
Mass of crane



Radio remote control

Photo: Standard model

SPECIFICATIONS [with Electric power unit]

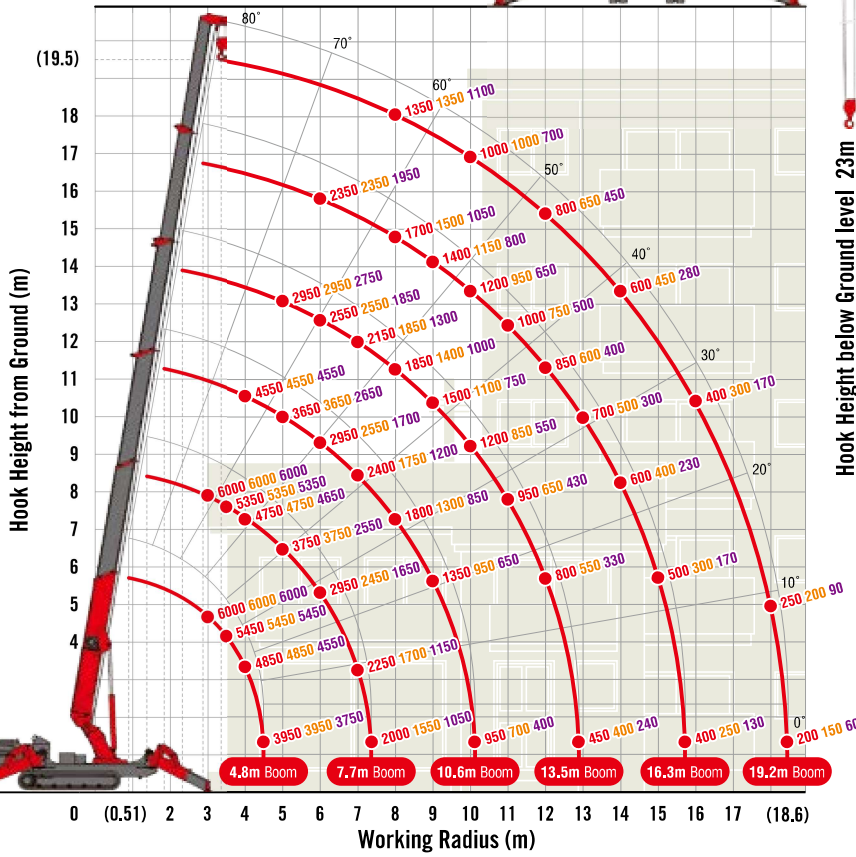
Crane model	URW706C4	
	A (Standard)	E-1(Safe load indicator)
Lifting capacity	Max. 6.05t at 3m	
Working radius	Min. 0.51m, Max. 18.6m	
Hook height (Approx.)	Max. 19.5m	
	Above ground level	Max. 19.5m
Below ground level	Max. 23m (with 4-part line)	
Length	Min. 4.8m to Max. 19.2m	
	14.4m / 52 sec.	
Extending speed	[50Hz] 14.4m / 110 sec. [60Hz] 14.4m / 90 sec.	
	0° to 80° / 16 sec.	
Raising angle / speed	[50Hz] 0° to 80° / 45 sec. [60Hz] 0° to 80° / 37 sec.	
Structure	6-section box beam type telescoping boom	
Single line speed	44 m/min (at 4th layer)	
	[50Hz] 15.6 m/min (at 4th layer) [60Hz] 17.7 m/min (at 4th layer)	
Hook speed	11 m/min (at 4th layer with 4-part line)	
	[50Hz] 3.9 m/min (at 4th layer with 4-part line) [60Hz] 4.4 m/min (at 4th layer with 4-part line)	
Wire rope	Construction : IWRC 6 x Fi(29) / Diameter x Length : 10mm x 111m / Breaking strength : 78.4kN (8000 kgf)	
Hook block	6t capacity, 2 sheaves with safety latch	
Range	360° continuous rotation on a ball bearing race	
	Speed	
Speed	2.5 rpm [50Hz] [60Hz] 1.8 rpm	
Outriggers	Horizontal, Vertical	
	A double acting hydraulic cylinder, direct pushing type (Directly connected with hydraulic automatic lock device)	
Type	Variable delivery piston pump	
	Rated pressure	
Rated pressure	For crawling: 24.5 MPa [250 kgf/cm ²] For crane: 20.6 MPa [210 kgf/cm ²]	
Hydraulic oil tank capacity	125.7 liters	
Safety devices <small>[with Safe load indicator]</small>	Pressure relief valve for hydraulic circuit / Counterbalance valves for boom raising and boom telescoping cylinders / Pilot-operated check valves for outrigger cylinders (Horizontal) / Double pilot-operated check valves for outrigger cylinders (Vertical) / Boom angle indicator with load indicator / Hook safety latch / Automatic mechanical brake for winch / Automatic stop for overwinding / Overwinding alarm / Automatic stop for leaving minimum wire rope / Emergency stop button / Inter-lock device of crane and crawling levers / Level / Two colored lamp* / Headlight / Automatic stop for overloading* / Safe load indicator / Inter-lock device of crane and outriggers / Outrigger ground contact detector / Three colored lamp	

* Only for standard model

MINI CRAWLER CRANE

WORKING RANGE & NET RATED LOADS (kg)

Outrigger ● Max-extended Mid-extended Min-extended



Hook Height below Ground level 23m

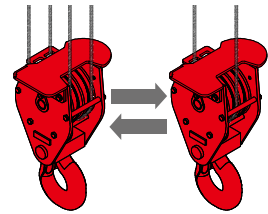
with Electric power unit (Option)



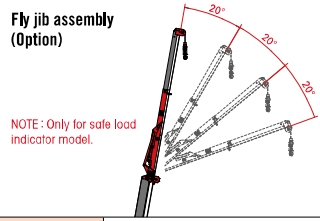
Rated power	7.5kW (3-phase 4 poles)
Voltage	AC 200V or 400V (50Hz / 60Hz)

*No cable included.

4 - 2 multi-part line hook block (Option)



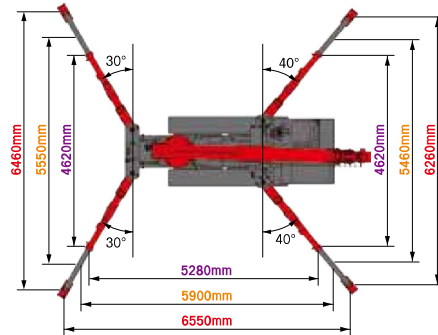
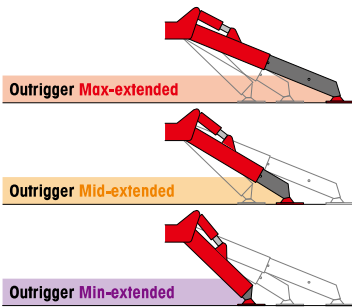
Fly jib assembly (Option)



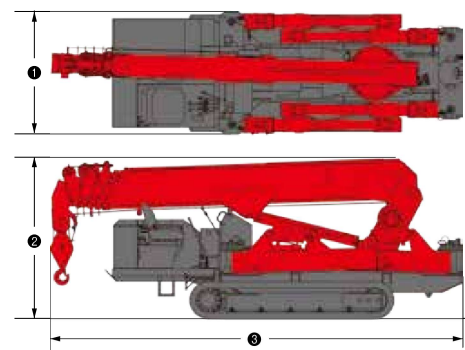
NOTE: Only for safe load indicator model.

Length	[Manual] Retracted: 2.11m Extended: 3.11m [Hydraulic tilt] Retracted: 3.8m Extended: 6.0m
Lifting capacity	Max. 820kg
Tilt angles	[Manual] 0°, 20°, 40°, 60° [Hydraulic tilt] 0° ~ 60°

OUTRIGGER POSITIONS



DIMENSIONS [with Electric power unit]



CRAWLING GEAR [with Electric power unit]

Crane model	URW706C4
Crawling speed	0~2.9 km/h, forward / backward [50Hz] 0~1 km/h [60Hz] 0~1.2 km/h
Hill climbing ability	23°
Tread length × width	2275mm × 400mm
Ground contact pressure	43.1 kPa [0.44 kgf/cm ²] 43.8 kPa [0.45 kgf/cm ²]
Engine manufacturer / model	Kubota / D1703-M-DI-E4B
Displacement	1647cc
Maximum output	18.5kW(25.2PS) / 2200 rpm, Rated output
Fuel	Diesel
Fuel tank capacity	60 liters
Steering	Hydraulic drive independent of left / right

Crane model	URW706C4
① Total width	1670mm
② Total height	2190mm
③ Total length	5610mm
Mass of crane	7990kg [8140kg]