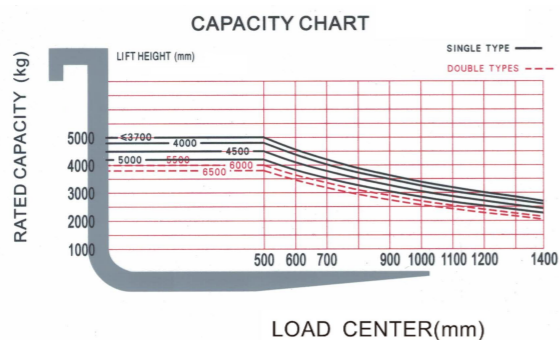




ELECTRIC FORKLIFT PARAMETERS TABLE

Projects	Unit	SOCMA		
Character	Brand	SOCMA		
	Model	FB50C	FB50C	
	Power mode	Lithium Iron Phosphate battery		
	Driving mode	Seat	Seat	
	Load capacity	Q (Kg)	5000	5000
	Load center	C (mm)	500	500
	Max.lifting height	h3 (mm)	3000	3000
Weight	Self-weight	kg	6900	
	Battery weight	kg	390	
Size	Front overhang	x (mm)	555	
	Wheelbase	y (mm)	2100	
	Mast tilting angle (fwd/bwd)	α/β (°)	6/12	
	Mast height(fork lowered)	h1 (mm)	2245	
	Free lifting height	h2 (mm)	150	
	Mast height(fork raised)	h4 (mm)	4365	
	Overhead guard height	h6 (mm)	2255	
	Driver's seat height	mm	1220	
	Overall length(without fork) (to backrest)	(mm)	3230	
	Overall width (to backrest)	b1 (mm)	1490	
	Fork size:thickness*width*length	mm	1220x150x55	1220x150x55
	Tires	Min. ground clearance (mast)	m1 (mm)	170
Min. ground clearance (middle of chassis)		mm	180	
Min. turning radius		Wa (mm)	2850	
Tire type		-	pneumatic tire	pneumatic tire
Tires	Tire number (X=driving tire)	-	2x/2	2x/2
	Front tire	-	300-15-18PR	300-15-18PR
	Rear tire	-	7.00-12-12PR	7.00-12-12PR
Performance	Travelling speed (loaded/unloaded)	Km/h	20/20	20/20
	Lifting speed (loaded/unloaded)	mm/s	470/520	470/520
	Max.drawbar pull(load/unloaded)	kN	20/20	23/20
	Max.gradeability (loaded/unloaded)	%	20/20	20/21
System	power unit	-	50ES	50G1
	power unit cooling type	-	liquid cooling	liquid cooling
	Travelling motor power	KW	20.0AC	20.0AC
	Working motor power	KW	20.0AC	20.0AC
	Battery (voltage/capacity)	V/Ah	80/410	153/280
Standard charger specifications(output)	V/A	80/200	150/100	

Note: The above data are subject to change without prior notice



LITHIUM BATTERY COUNTER BALANCED FORKLIFT

FB50C



Address: Fujian Quanzhou Taiwanese Investment Area
 International Sales Tel: 0086-592-5650603
 Domestic Sales Tel: 0086-595-27393198
 Email: overseas@socmachinery.com
 Website: <http://www.socmachinery.com>

@ SOCMA Material Handling
 @ SOCMA GROUP



SOCMA POWER LIFT YOUR BUSINESS

FUJIAN SOUTHCHINA HEAVY MACHINERY MANUFACTURE CO., LTD

<http://www.socmachinery.com>

FEATURES OF SOCMA ELECTRIC FORKLIFTS



Extra-wide mast with wide field of view



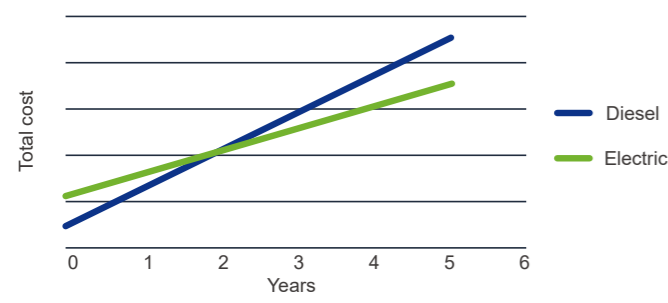
Excellent ergonomics technology



Short body, flexible space



Fast charging port, charge and use at any time

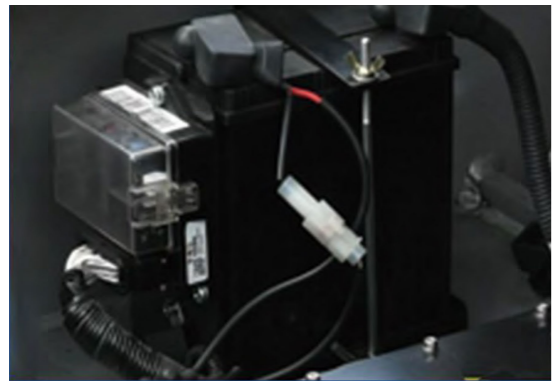


ECONOMY

- ◆ Low cost of use: The cost of electricity is about 20~30% of the fuel consumption of traditional construction machinery.
- ◆ Low maintenance cost: fewer wearing parts, low failure rate, and simple maintenance; there is no need for regular maintenance of the diesel engine, replacement of oil, three filters, etc., and the maintenance cost is reduced by more than 50% compared with traditional diesel engineering machinery.

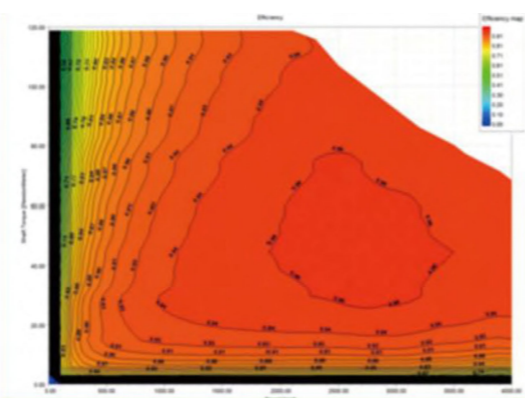
INTELLIGENT WAKE-UP SYSTEM

- ◆ System self-inspection to ensure that all parts meet the working conditions before starting the forklift
- ◆ Completely cut off the lithium battery power supply to avoid lithium battery power loss due to long-term storage



ADOPT PERMANENT MAGNET MOTOR

- ◆ Reduce copper consumption, reduce motor electromagnetic noise, improve heat dissipation performance
- ◆ High space utilization rate, and increase overall efficiency by 20%



Intelligent lithium battery charger



Open the hood at a large angle for easy maintenance



Large capacity lithium battery



Large-screen interactive display instrument

