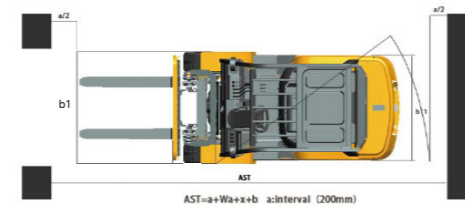
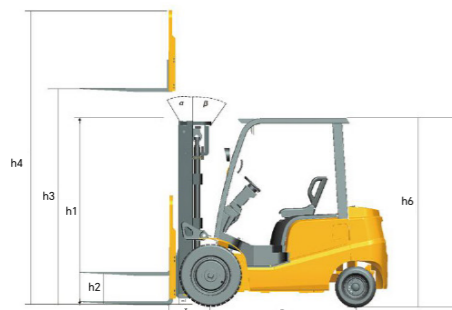


ELECTRIC FORKLIFT PARAMETERS TABLE



Projects	Unit	SOCMA				
Brand	—	SOCMA				
Model	—	FB20	FB25	FB30	FB35	FB40
Power mode	—	Lithium Iron Phosphate battery				
Driving mode	—	Seat	Seat	Seat	Seat	Seat
Load capacity	Q (Kg)	2000	2500	3000	3500	4000
Load center	C (mm)	500	500	500	500	500
Max.lifting height	h3 (mm)	3000	4500	4500	3000	3000
Self-weight	kg	3650	3810	4110	4410	4800
Battery weight	kg	154	154	180	180	305
Front overhang	x (mm)	470	470	475	475	490
Wheelbase	y (mm)	1550	1572	1665	1650	1750
Mast tilting angle (fwd/bwd)	α/β (°)	6/12	6/12	6/12	6/12	6/12
Mast height(fork lowered)	h1 (mm)	2080	2175	2190	2140	2180
Free lifting height	h2 (mm)	140	140	145	145	150
Mast height(fork raised)	h4 (mm)	4040	4040	4135	4135	4240
Overhead guard height	h6 (mm)	2125	2125	2150	2150	2165
Driver's seat height	mm	1075	1075	1110	1110	1125
Overall length(without fork) (to backrest)	(mm)	2420	2465	2560	2585	2665
Overall width (to backrest)	b1 (mm)	1160	1145	1226	1220	1280
Fork size:thickness*width*length	mm	1220X122X40	1220X122X40	1220X125X45	1220X125X50	1220X125X50
Min. ground clearance (mast)	m1 (mm)	130	130	140	140	145
Min. ground clearance (middle of chassis)	mm	140	140	150	150	150
Min. turning radius	Wa (mm)	2250	2250	2350	2395	2460
Tire type	-	pneumatic tire	pneumatic tire	pneumatic tire	pneumatic tire/Solid	pneumatic tire/Solid
Tire number (X=driving tire)	-	2×/2	2×/2	2×/2	2×/2	2×/2
Front tire	-	7.00-12-12PR	7.00-12-12PR	28X9-15-14PR	28X9-15-14PR	250-15-16PR
Rear tire	-	18X7-8-14PR	18X7-8-14PR	18X7-8-14PR	18X7-8	18X7-8
Travelling speed (loaded/unloaded)	Km/h	16/16	16/16	15/15	15/15	20/20
Lifting speed (loaded/unloaded)	mm/s	300/440	300/440	320/460	310/460	400/460
Max.drawbar pull(load/unloaded)	kN	22/21	21.5/20.5	20.5/19.5	19.5/18	26/26
Max.gradeability (loaded/unloaded)	%	15/15	15/15	15/15	15/15	20/20
power unit	-	35G2	35G2	35G2	35G2	35S2
power unit cooling type	-	Air cooling	Air cooling	Air cooling	Air cooling	Liquid cooling
Travelling motor power	KW	15.0AC	15.0AC	15.0AC	15.0AC	20.0AC
Working motor power	KW	15.0AC	15.0AC	15.0AC	15.0AC	20.0AC
Battery (voltage/capacity)	V/Ah	115.2/125	115.2/125	115.2/173	115.2/173	153.6/230
Standard charger specifications(output)	V/A	115/50	115/50	115/100	115/100	150/100

Note: The above data are subject to change without prior notice



Address: Fujian Quanzhou Taiwanese Investment Area
 International Sales Tel: 0086-592-5650603
 Domestic Sales Tel: 0086-595-27393198
 Email: overseas@socmachinery.com
 Website: <http://www.socmachinery.com>

@ SOCMA Material Handling
 @ SOCMA GROUP



LITHIUM BATTERY COUNTER BALANCED FORKLIFT

FB20/25/30/35/40



SOCMA POWER LIFT YOUR BUSINESS

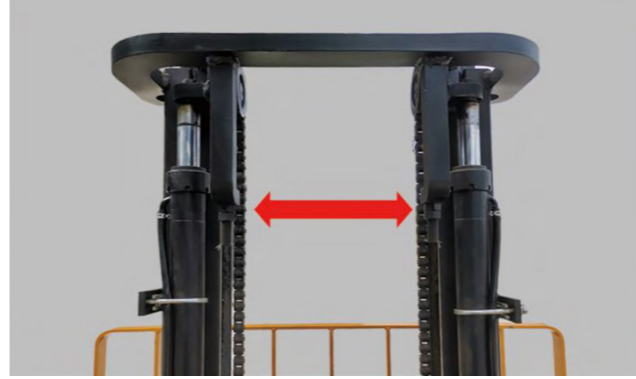
FUJIAN SOUTHCHINA HEAVY MACHINERY MANUFACTURE CO., LTD

<http://www.socmachinery.com>

FEATURES OF SOCMA ELECTRIC FORKLIFTS



Extra-wide mast with wide field of view



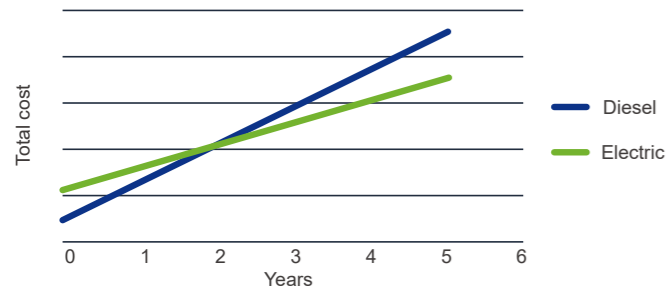
Excellent ergonomics technology



Short body, flexible space



Fast charging port, charge and use at any time

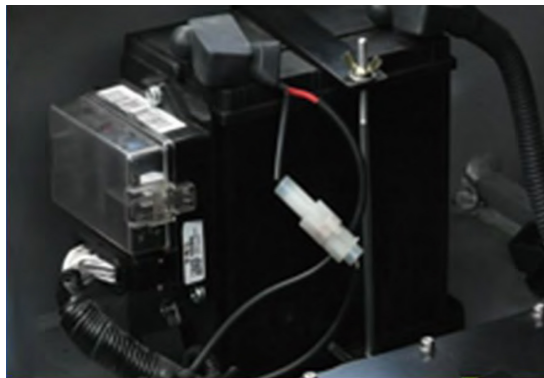


ECONOMY

- ◆ Low cost of use: The cost of electricity is about 20~30% of the fuel consumption of traditional construction machinery.
- ◆ Low maintenance cost: fewer wearing parts, low failure rate, and simple maintenance; there is no need for regular maintenance of the diesel engine, replacement of oil, three filters, etc., and the maintenance cost is reduced by more than 50% compared with traditional diesel engineering machinery.

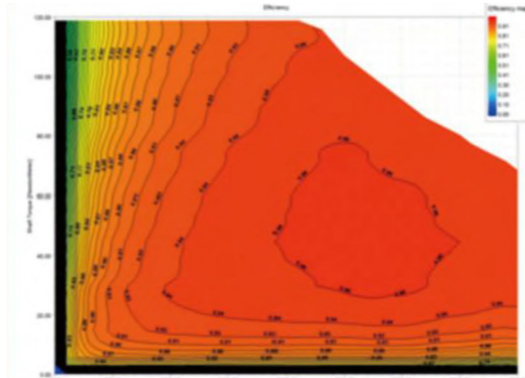
INTELLIGENT WAKE-UP SYSTEM

- ◆ System self-inspection to ensure that all parts meet the working conditions before starting the forklift
- ◆ Completely cut off the lithium battery power supply to avoid lithium battery power loss due to long-term storage



ADOPT PERMANENT MAGNET MOTOR

- ◆ Reduce copper consumption, reduce motor electromagnetic noise, improve heat dissipation performance
- ◆ High space utilization rate, and increase overall efficiency by 20%



Intelligent lithium battery charger



Open the hood at a large angle for easy maintenance



Large capacity lithium battery



Large-screen interactive display instrument

