

**NISSAN**  
**FORKLIFT**

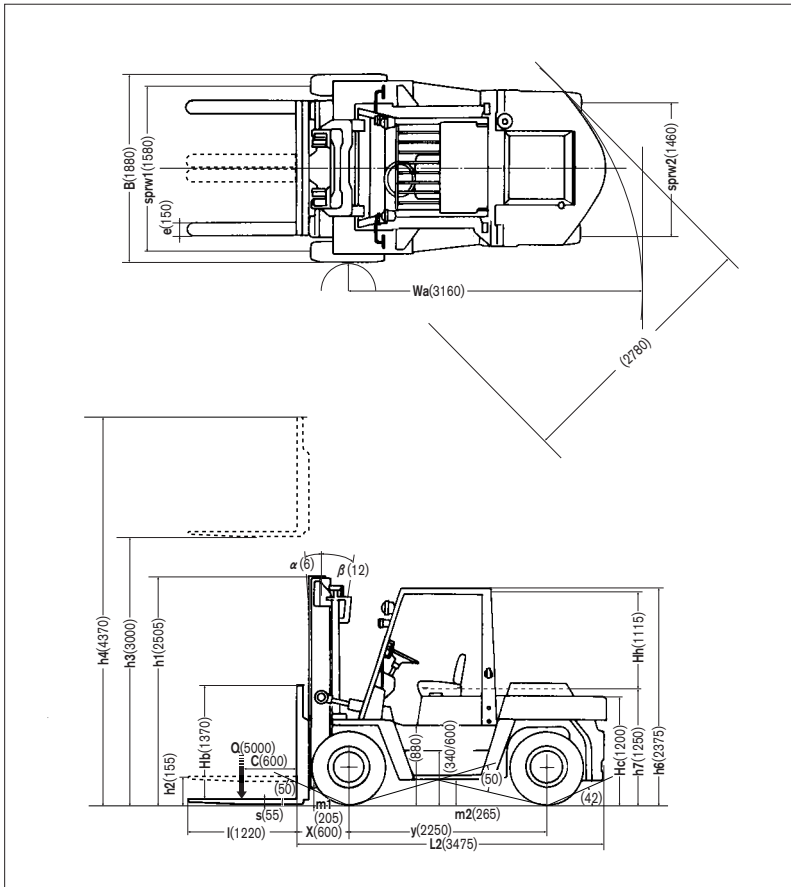
# F05 Series

Pneumatic Tire/Engine Powered Models

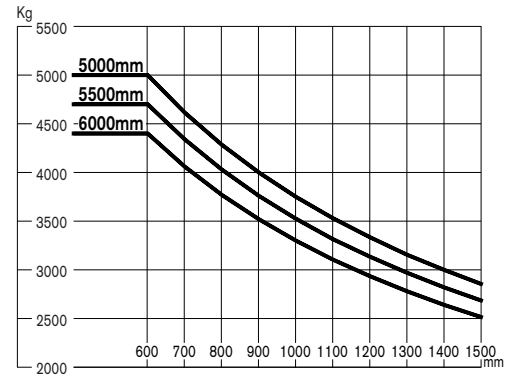
**5.0 ton ▶ 7.0 ton**  
at 600mm Load Center



## Dimensions



## Load Capacity Chart



No capacity reduction until 5000 mm height. Load capacities are computed with following conditions, a) Standard 2W Mast and b) Mast in vertical position.

## Tire and Tread specifications

Front Tire	single	double
Front Tire Size	300-15-18PR(I)	8.25-15-12PR(I)
Overall Width mm	1880	1990
Front Tread mm	1580	1470

## Ground Clearance

Under mast	mm	205
Under power unit	mm	210
Under frame	mm	265

## Mast Specifications & Rated Capacities

### JF05H50PU,WF05H50U,VF05H50U

Mast type	Mast name	Max. fork Height mm	Overall height		Free lift		Front overhang mm	Tilt angle Forward/ Backward deg	Capacity		
			Fully lowered mm	Fully extended *Without backrest mm	With STD backrest mm	**Without backrest mm			With STD backrest mm	Single tire Load center 600mm Kg	Double tire Load center 600mm Kg
Two stage (Wide view 2W)	2W270	2700	2355	3845	4070	155	155	600	6 / 12	5000	5000
	2W300	3000	2505	4145	4370					5000	5000
	2W330	3300	2655	4445	4670					5000	5000
	2W350	3500	2755	4645	4870					5000	5000
	2W370	3700	2855	4845	5070					5000	5000
	2W400	4000	3105	5145	5370					5000	5000
	2W450	4500	3355	5645	5870				5000	5000	
	2W500	5000	3605	6145	6370				5000	5000	
	2W550	5500	3955	6645	6870				6 / 6	4700	4700
2W600	6000	4205	7145	7370	4400	4400					
Three stage (Full free 3F)	3F400	4000	2355	5205	5370	1200	1045	630	6 / 6	4600	4600
	3F450	4500	2505	5705	5870	1350	1195			4600	4600
	3F500	5000	2755	6205	6370	1600	1445			4600	4600
	3F550	5500	2855	6705	6870	1700	1545			4400	4400
	3F600	6000	3105	7205	7370	1950	1795			4200	4200

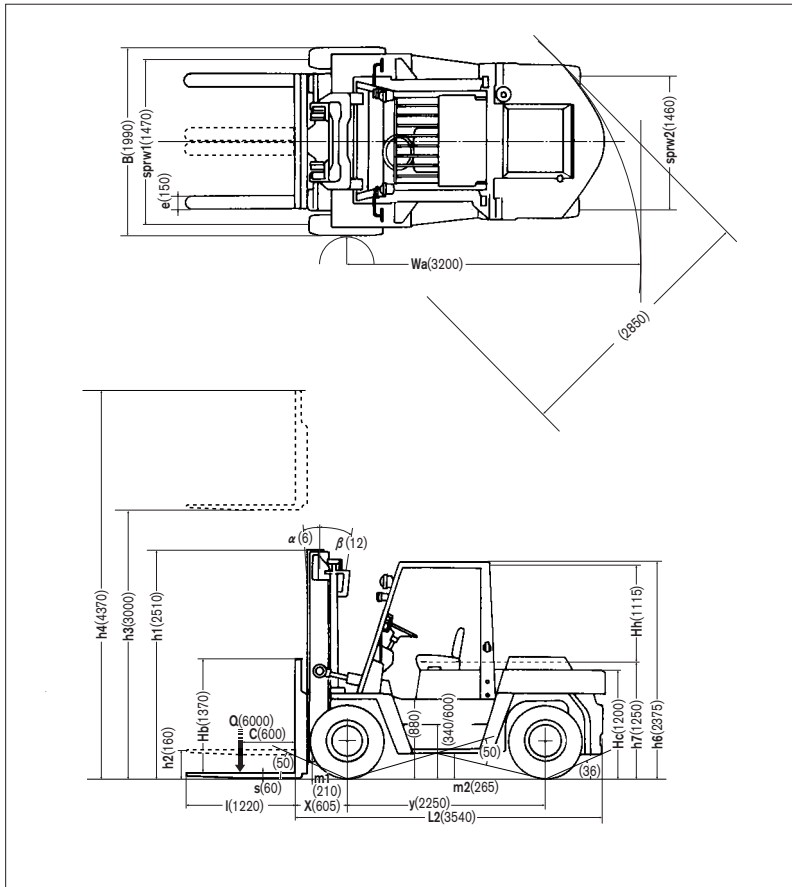
\* Add 10 mm for 2W and 3F masts with protector.

\*\* Exclude 10 mm for 3F masts with protector.

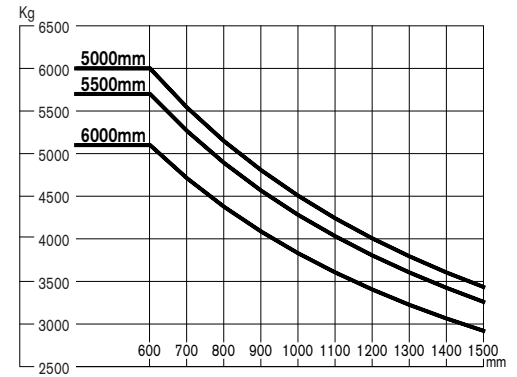
## Main Truck Specifications

Item				JF05H50PU	WF05H50U	VF05H50U			
SPECIFICATIONS	1	Manufacturer		NISSAN	NISSAN	NISSAN	1		
	2	Model		JF05H50PU	WF05H50U	VF05H50U	2		
	3	Load capacity	Q load lifted	kg	5000	5000	5000	3	
	4	Load center	C distance	mm	600	600	600	4	
	5	Power unit	battery, diesel, gasoline, LP gas		LPG(Single Fuel)	Diesel	Diesel	5	
	6	Operator type	walkie, rider / stand, rider / seat		Rider / seat	Rider / seat	Rider / seat	6	
	7	Tire type	front / rear		PNE / PNE	PNE / PNE	PNE / PNE	7	
	8	Wheels(x=driven)	number front / rear		2× / 2	2× / 2	2× / 2	8	
DIMENSIONS	9	Maximum fork height	h3 standard lift height	mm	3000	3000	3000	9	
	10	Free lift	h2 standard free lift	mm	155	155	155	10	
	13	Fork size	s.e.l	mm	55×150×1220	55×150×1220	55×150×1220	13	
		Max. Fork Spread		mm	1500	1500	1500		
		Min. Fork Spread		mm	310	310	310		
	14	Tilt range	$\alpha / \beta$ mast forward / backward	deg	6 / 12	6 / 12	6 / 12	14	
	15	Overall measurement	L2 length to fork face	mm	3475	3475	3475	15	
	16		B overall width	mm	1880	1880	1880	16	
	17		h1 height mast retracted	mm	2505	2505	2505	17	
	18		h4 height mast extended	mm	4370	4370	4370	18	
	19		h6 height overhead guard	mm	2375	2375	2375	19	
	20		h7 height of driver's seat	mm	1250	1250	1250	20	
	21	Turning radius (outside)	Wa	mm	3160	3160	3160	21	
	22	Load distance	X from center of front axle	mm	600	600	600	22	
	23	Basic right angle stacking aisle		mm	3760	3760	3760	23	
PERFORMANCE	24	travelling	full load	km/h	26	26	33	24	
			no load	km/h	27	27	34		
		lifting	full load	mm/s	455	420	540	25	
			no load	mm/s	460	430	590		
		lowering	full load	mm/s	500	500	500	26	
			no load	mm/s	450	450	450		
28	Max. drawbar pull	full load / no load	N	58800 / 27450	52900 / 27450	60750 / 27450	28		
30	Max. gradeability	full load / no load	tan $\theta$ %	51 / 28	45 / 28	50 / 28	30		
WEIGHTS	32	Truck weight	no load	kg	7355	7420	7610	32	
	33	Weight distribution	full load	front / rear	kg	11235 / 1120	11260 / 1160	11305 / 1305	33
			no load	front / rear	kg	3565 / 3790	3590 / 3830	3640 / 3790	34
CHASSIS & WHEELS	35	Tires	number	front / rear	each	2 / 2	2 / 2	2 / 2	35
			size-front			300-15-18PR(I)	300-15-18PR(I)	300-15-18PR(I)	36
			size-rear			8.25-15-12PR(I)	8.25-15-12PR(I)	8.25-15-12PR(I)	37
	38	Wheelbase	y	mm	2250	2250	2250	38	
	39	Tread	sprw 1 / sprw 2 front / rear	mm	1580/1460	1580/1460	1580/1460	39	
		Backrest height	Hb top of backrest~upper of fork face	mm	1370	1370	1370		
		Overhead guard clearance	Hh	mm	1115	1115	1115		
	Counterweight height	Hc	mm	1200	1200	1200			
40	Ground clearance	m1	full load minimum	mm	205	205	205	40	
		m2	full load center of wheelbase	mm	265	265	265	41	
42	Service brake	mechanical / hydraulic / electric / pneu		hydraulic	hydraulic	hydraulic	42		
43	Parking brake	foot / hand / seat switch		hand	hand	hand	43		
DRIVE LINE	45	Battery	voltage / capacity (5 hour)	V/AH	12 / 48	12 / 60×2	12 / 80×2	45	
	49	Internal Combustion engine	manufacturer / type		NISSAN / TB45	NISSAN / TD42	NISSAN / FE6	49	
	50		maximum engine rated power	kW/rpm	75/2450	63/2300	88/2100	50	
	51		maximum engine rated torque	Nm/rpm	297/1600	275/1600	412/1600	51	
	52		number of cylinders / displacement	/ cc	6 / 4478	6 / 4169	6 / 6925	52	
	55	Transmission	type		Automatic	Automatic	Automatic	55	
			speed	forward / backward		1 / 1	1 / 1	1 / 1	
57	Operating pressure	for attachment	MPa	13.7	13.7	13.7	57		

## Dimensions



## Load Capacity Chart



No capacity reduction until 5000 mm height. Load capacities are computed with following conditions, a) Standard 2W Mast and b) Mast in vertical position.

## Tire and Tread specifications

Front Tire	double
Front Tire Size	8.25-15-12PR(I)
Overall Width mm	1990
Front Tread mm	1470

## Ground Clearance

Under mast	mm	210
Under power unit	mm	210
Under frame	mm	265

## Mast Specifications & Rated Capacities

### JF05H60PU,WF05H60U,VF05H60U

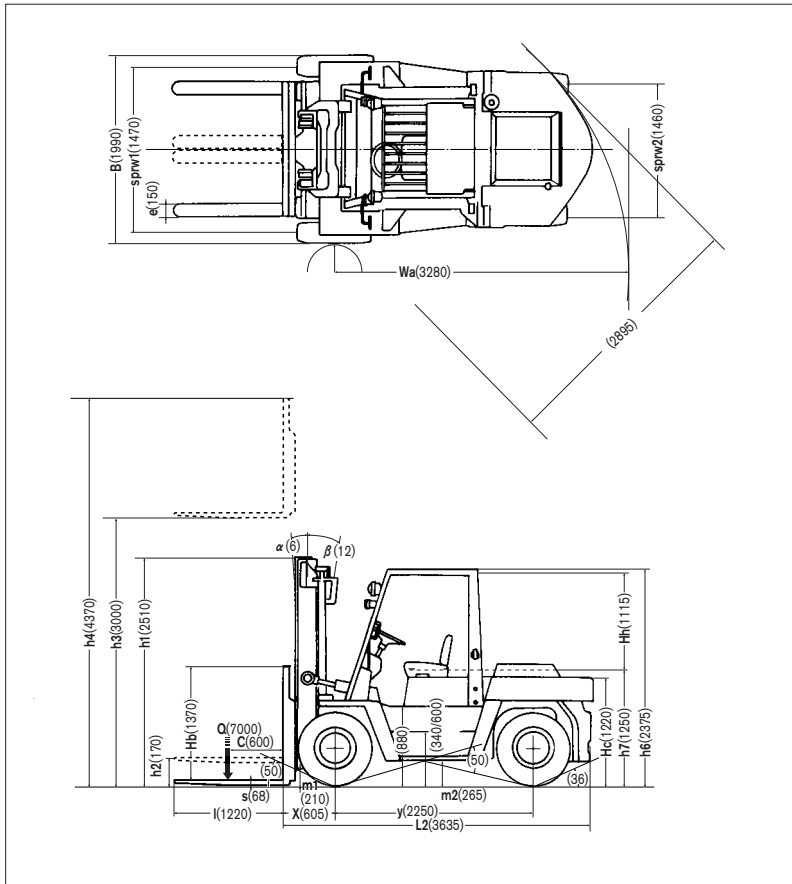
Mast type	Mast name	Max. fork Height mm	Overall height		Free lift		Front overhang mm	Tilt angle Forward/ Backward deg	Capacity Double tire Load center 600mm Kg	
			Fully lowered mm	Fully extended		**Without backrest mm				With STD backrest mm
				*Without backrest mm	With STD backrest mm					
Two stage (Wide view 2W)	2W270	2700	2360	3845	4070	160	160	605	6 / 12	6000
	2W300	3000	2510	4145	4370					6000
	2W330	3300	2660	4445	4670					6000
	2W350	3500	2760	4645	4870					6000
	2W370	3700	2860	4845	5070					6000
	2W400	4000	3110	5145	5370					6000
	2W450	4500	3360	5645	5870					6000
	2W500	5000	3610	6145	6370					6000
	2W550	5500	3960	6645	6870					6 / 6
	2W600	6000	4210	7145	7370				5100	
Three stage (Full free 3F)	3F400	4000	2360	5205	5370	1205	1050	635	6 / 6	5600
	3F450	4500	2510	5705	5870	1355	1200			5600
	3F500	5000	2760	6205	6370	1605	1450			5600
	3F550	5500	2860	6705	6870	1705	1550			5400
	3F600	6000	3110	7205	7370	1955	1800			5200

\* Add 10 mm for 2W and 3F masts with protector.  
\*\* Exclude 10 mm for 3F masts with protector.

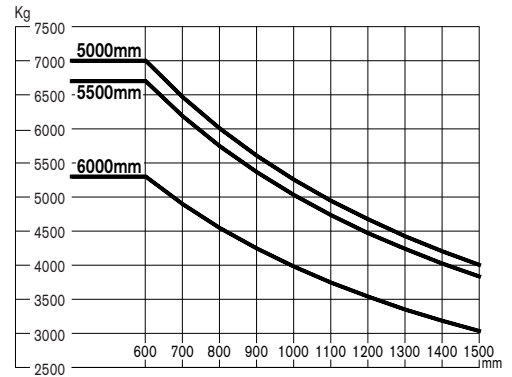
## Main Truck Specifications

Item					JF05H60PU	WF05H60U	VF05H60U			
SPECIFICATIONS	1	Manufacturer				NISSAN	NISSAN	NISSAN	1	
	2	Model				JF05H60PU	WF05H60U	VF05H60U	2	
	3	Load capacity	Q	load lifted	kg	6000	6000	6000	3	
	4	Load center	C	distance	mm	600	600	600	4	
	5	Power unit	battery, diesel, gasoline, LP gas			LPG(Single Fuel)	Diesel	Diesel	5	
	6	Operator type	walkie, rider / stand, rider / seat			Rider / seat	Rider / seat	Rider / seat	6	
	7	Tire type	front / rear			PNE / PNE	PNE / PNE	PNE / PNE	7	
	8	Wheels(x=driven)	number	front / rear		4 × / 2	4 × / 2	4 × / 2	8	
DIMENSIONS	9	Maximum fork height	h3	standard lift height	mm	3000	3000	3000	9	
	10	Free lift	h2	standard free lift	mm	160	160	160	10	
	13	Fork size	s.e.l			mm	60 × 150 × 1220	60 × 150 × 1220	60 × 150 × 1220	13
		Max. Fork Spread				mm	1500	1500	1500	
		Min. Fork Spread				mm	310	310	310	
	14	Tilt range	$\alpha / \beta$	mast forward / backward		deg	6 / 12	6 / 12	6 / 12	14
	15	Overall measurement	L2	length to fork face		mm	3540	3540	3540	15
	16		B	overall width		mm	1990	1990	1990	16
	17		h1	height mast retracted		mm	2510	2510	2510	17
	18		h4	height mast extended		mm	4370	4370	4370	18
	19		h6	height overhead guard		mm	2375	2375	2375	19
	20		h7	height of driver's seat		mm	1250	1250	1250	20
	21		Turning radius (outside)	Wa			mm	3200	3200	3200
	22	Load distance	X	from center of front axle		mm	605	605	605	22
	23	Basic right angle stacking aisle				mm	3805	3805	3805	23
PERFORMANCE	24	Speeds	travelling	full load	km/h	26	26	32	24	
				no load	km/h	27	27	34		
			lifting	full load	mm/s	455	410	530	25	
				no load	mm/s	460	430	590		
			lowering	full load	mm/s	500	500	500	26	
				no load	mm/s	450	450	450		
28	Max. drawbar pull	full load / no load			N	57800 / 27450	51950 / 27450	60750 / 27450	28	
30	Max. gradeability	full load / no load			tan $\theta$ %	43 / 25	38 / 25	42 / 25	30	
WEIGHTS	32	Truck weight	no load		kg	8005	8075	8260	32	
	33	Weight distribution	full load		kg	12710 / 1295	12735 / 1340	12785 / 1475	33	
			no load		kg	3500 / 4505	3525 / 4550	3570 / 4690		
CHASSIS & WHEELS	35	Tires	number	front / rear	each	4 / 2	4 / 2	4 / 2	35	
			size-front				8.25-15-12PR(I)	8.25-15-12PR(I)	8.25-15-12PR(I)	36
			size-rear				8.25-15-12PR(I)	8.25-15-12PR(I)	8.25-15-12PR(I)	37
	38	Wheelbase	y			mm	2250	2250	2250	38
	39	Tread	sprw 1 / sprw 2	front / rear		mm	1470/1460	1470/1460	1470/1460	39
		Backrest height	Hb	top of backrest~upper of fork face		mm	1370	1370	1370	
		Overhead guard clearance	Hh			mm	1115	1115	1115	
		Counterweight height	Hc			mm	1200	1200	1200	
	40	Ground clearance	m1	full load minimum		mm	210	210	210	40
	41		m2	full load center of wheelbase		mm	265	265	265	
42	Service brake	mechanical / hydraulic / electric / pneu				hydraulic	hydraulic	hydraulic	42	
43	Parking brake	foot / hand / seat switch				hand	hand	hand	43	
DRIVE LINE	45	Battery	voltage / capacity (5 hour)		V/AH	12 / 48	12 / 60 × 2	12 / 80 × 2	45	
	49	Internal Combustion engine	manufacturer / type			NISSAN / TB45	NISSAN / TD42	NISSAN / FE6	49	
	50		maximum engine rated power		kW/rpm	75/2450	63/2300	88/2100	50	
	51		maximum engine rated torque		Nm/rpm	297/1600	275/1600	412/1600	51	
	52		number of cylinders / displacement		/ cc	6 / 4478	6 / 4169	6 / 6925	52	
	55	Transmission	type			Automatic	Automatic	Automatic	55	
			speed	forward / backward			1 / 1	1 / 1	1 / 1	
57	Operating pressure	for attachment		MPa	13.7	13.7	13.7	57		

## Dimensions



## Load Capacity Chart



No capacity reduction until 5000 mm height. Load capacities are computed with following conditions, a) Standard 2W Mast and b) Mast in vertical position.

## Tire and Tread specifications

Front Tire	double
Front Tire Size	8.25-15-14PR(I)
Overall Width mm	1990
Front Tread mm	1470

## Ground Clearance

Under mast	mm	210
Under power unit	mm	210
Under frame	mm	265

## Mast Specifications & Rated Capacities

### JF05H70PU,WF05H70U,VF05H70U

Mast type	Mast name	Max. fork Height mm	Overall height		Free lift		Front overhang mm	Tilt angle Forward/ Backward deg	Capacity Double tire Load center 600mm Kg	
			Fully lowered mm	Fully extended	**Without backrest mm	With STD backrest mm				
Two stage (Wide view 2W)	2W270	2700	2360	3845	4070	170	170	605	6 / 12	7000
	2W300	3000	2510	4145	4370					7000
	2W330	3300	2660	4445	4670					7000
	2W350	3500	2760	4645	4870					7000
	2W370	3700	2860	4845	5070					7000
	2W400	4000	3110	5145	5370					7000
	2W450	4500	3360	5645	5870					7000
	2W500	5000	3610	6145	6370					7000
	2W550	5500	3960	6645	6870					6700
	2W600	6000	4210	7145	7370					5300
Three stage (Full free 3F)	3F400	4000	2360	5205	5370	1205	1060	635	6 / 6	6600
	3F450	4500	2510	5705	5870	1355	1210			6600
	3F500	5000	2760	6205	6370	1605	1460			6600
	3F550	5500	2860	6705	6870	1705	1560			6400
	3F600	6000	3110	7205	7370	1955	1810			5500

\* Add 10 mm for 2W and 3F masts with protector.  
\*\* Exclude 10 mm for 3F masts with protector.

## Main Truck Specifications

Item					JF05H70PU	WF05H70U	VF05H70U		
SPECIFICATIONS	1	Manufacturer			NISSAN	NISSAN	NISSAN	1	
	2	Model			JF05H70PU	WF05H70U	VF05H70U	2	
	3	Load capacity	Q load lifted	kg	7000	7000	7000	3	
	4	Load center	C distance	mm	600	600	600	4	
	5	Power unit	battery, diesel, gasoline, LP gas		LPG(Single Fuel)	Diesel	Diesel	5	
	6	Operator type	walkie, rider / stand, rider / seat		Rider / seat	Rider / seat	Rider / seat	6	
	7	Tire type		front / rear	PNE / PNE	PNE / PNE	PNE / PNE	7	
	8	Wheels(x=driven)	number	front / rear	4 × / 2	4 × / 2	4 × / 2	8	
DIMENSIONS	9	Maximum fork height	h3 standard lift height	mm	3000	3000	3000	9	
	10	Free lift	h2 standard free lift	mm	170	170	170	10	
	13	Fork size	s.e.l	mm	68 × 150 × 1220	68 × 150 × 1220	68 × 150 × 1220	13	
		Max. Fork Spread		mm	1500	1500	1500		
		Min. Fork Spread		mm	310	310	310		
	14	Tilt range	$\alpha / \beta$ mast forward / backward	deg	6 / 12	6 / 12	6 / 12	14	
	15	Overall measurement	L2 length to fork face	mm	3635	3635	3635	15	
	16		B overall width	mm	1990	1990	1990	16	
	17		h1 height mast retracted	mm	2510	2510	2510	17	
	18		h4 height mast extended	mm	4370	4370	4370	18	
	19		h6 height overhead guard	mm	2375	2375	2375	19	
	20		h7 height of driver's seat	mm	1250	1250	1250	20	
	21	Turning radius (outside)	Wa	mm	3280	3280	3280	21	
	22	Load distance	X from center of front axle	mm	605	605	605	22	
	23	Basic right angle stacking aisle		mm	3885	3885	3885	23	
PERFORMANCE	24	travelling	full load	km/h	25	25	31	24	
			no load	km/h	27	27	34		
		lifting	full load	mm/s	455	360	480	25	
			no load	mm/s	460	390	530		
		lowering	full load	mm/s	450	450	450	26	
			no load	mm/s	400	400	400		
28	Max. drawbar pull	full load / no load	N	57800 / 27450	51950 / 27450	60750 / 27450	28		
30	Max. gradeability	full load / no load	tan $\theta$ %	37 / 22	31 / 22	36 / 22	30		
WEIGHTS	32	Truck weight	no load	kg	8900	8965	9155	32	
	33	Weight distribution	full load	front / rear	kg	14215 / 1685	14245 / 1720	14285 / 1870	33
			no load	front / rear	kg	3465 / 5435	3500 / 5465	3535 / 5620	34
CHASSIS & WHEELS	35	Tires	number	front / rear	each	4 / 2	4 / 2	4 / 2	35
			size-front			8.25-15-14PR( I )	8.25-15-14PR( I )	8.25-15-14PR( I )	36
			size-rear			8.25-15-14PR( I )	8.25-15-14PR( I )	8.25-15-14PR( I )	37
	38	Wheelbase	y	mm	2250	2250	2250	38	
	39	Tread	sprw 1 / sprw 2	front / rear	mm	1470/1460	1470/1460	1470/1460	39
		Backrest height	Hb top of backrest~upper of fork face	mm	1370	1370	1370		
		Overhead guard clearance	Hh	mm	1115	1115	1115		
	Counterweight height	Hc	mm	1220	1220	1220			
40	Ground clearance	m1 full load minimum	mm	210	210	210	40		
		m2 full load center of wheelbase	mm	265	265	265	41		
42	Service brake	mechanical / hydraulic / electric / pneu		hydraulic	hydraulic	hydraulic	42		
43	Parking brake	foot / hand / seat switch		hand	hand	hand	43		
DRIVE LINE	45	Battery	voltage / capacity (5 hour)	V/AH	12 / 80	12 / 80 × 2	12 / 80 × 2	45	
	49	Internal Combustion engine	manufacturer / type		NISSAN / TB45	NISSAN / TD42	NISSAN / FE6	49	
	50		maximum engine rated power	kW/rpm	75/2450	63/2300	88/2100	50	
	51		maximum engine rated torque	Nm/rpm	297/1600	275/1600	412/1600	51	
	52		number of cylinders / displacement	/ cc	6 / 4478	6 / 4169	6 / 6925	52	
	55	Transmission	type		Automatic	Automatic	Automatic	55	
			speed	forward / backward		1 / 1	1 / 1	1 / 1	
57	Operating pressure	for attachment	MPa	13.7	13.7	13.7	57		

## Nissan Full Lineup That Exceeds All Expectations



NISSAN MOTOR CO., LTD.

SEF5M-7 0902-1470 Printed in Japan

**NISSAN**  
**FORKLIFT**