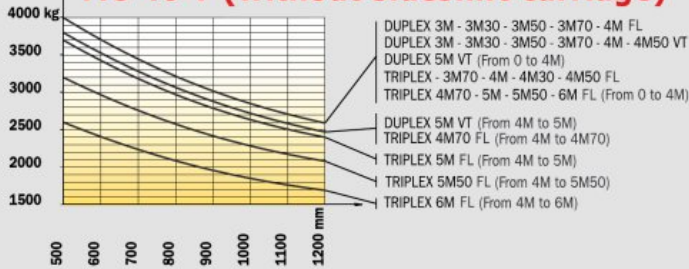


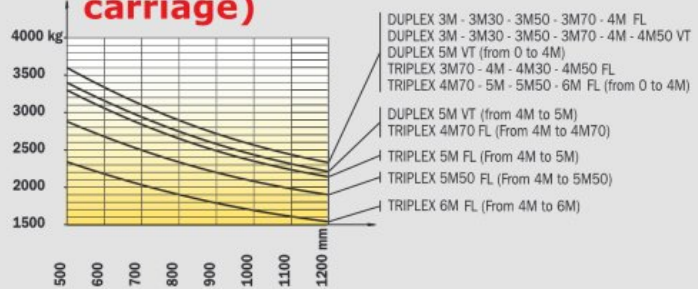
# Load charts MC 40/MC 50 T Powershift

(in accordance with standard EN 1726 - 1 Appendix H)

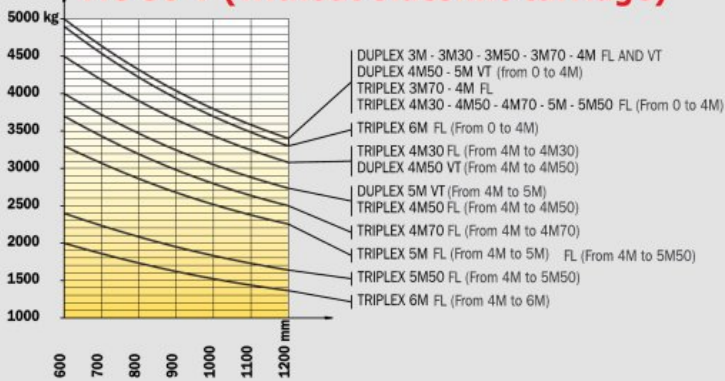
## MC 40 T (without sideshift carriage)



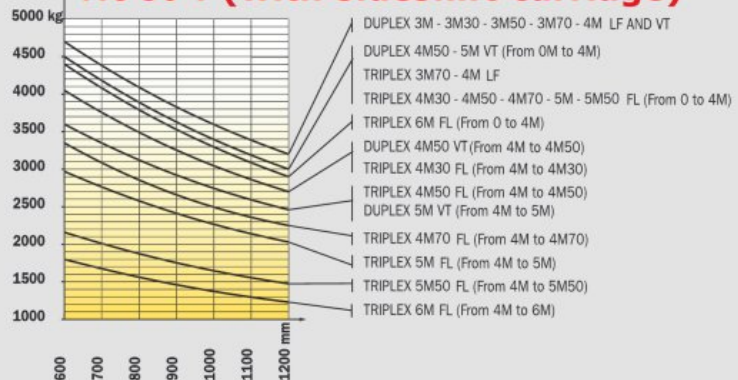
## MC 40 T (with sideshift carriage)



## MC 50 T (without sideshift carriage)



## MC 50 T (with sideshift carriage)



## MC 40/50 T Powershift Euro III



### Load capacity

MC 40 T Powershift .....4000 kg  
 500 mm from fork centres  
 MC 50 T Powershift .....5000 kg  
 600 mm from fork centres



### Lifting height .....3.70 m

Speed unladen/laden (m/s)

Lifting

MC 40 T Powershift .....0.5/0.5  
 MC 50 T Powershift .....0.4/0.4

Lowering

MC 40 T Powershift .....0.4/0.5  
 MC 50 T Powershift .....0.4/0.5



### Tyres

Front.....18-19,5 18 PR A224  
 Rear.....10 R 17.5 G 291



### Forks (mm)

Length.....1200  
 Width x thickness  
 MC 40 T Powershift .....150x50  
 MC 50 T Powershift .....150x60



### Oil-immersed multidisc hydraulic brakes



### PERKINS engine EURO III (Tier 3/Stage III A)

Type .....1104 D 44 T  
 Capacity .....4 cyl. - 4400 cm<sup>3</sup>  
 Rated speed .....2200 rpm  
 Power (ISO/TR 14396).....70 Kw (95 cv)  
 Max. torque.....392 Nm to 1400 tr/mn  
 Direct injection  
 Water cooling  
 Travelling up a slope when unloads/when loaded  
 MC 40 T .....43%/65%  
 MC 50 T .....28%/59%  
 Sound level at the Driving position.....76 dB  
 (following EN 12053)



### Transmission .....Powershift

Reverse shift .....electro-hydraulic  
 4 speeds forward and 3 reverse  
 Max. travel speed.....24 km/h  
 Differential lock with electro-hydraulic control



### Hydraulics

Main gear pump  
 Pressure/flow .....210 bar/85 l./mn  
 Flow divider with priority to steering  
 Pressure/flow .....145 bar/85 l./mn



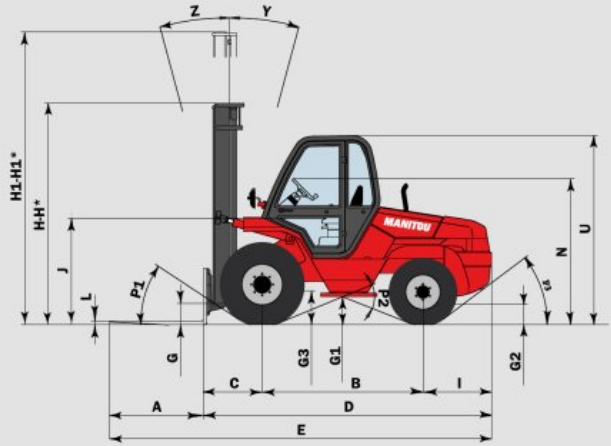
### Capacities

Cooling system .....14.5 l  
 Engine oil .....8.5 l  
 Hydraulic oil.....80 l  
 Transmission oil .....12.5 l  
 Fuel .....85 l



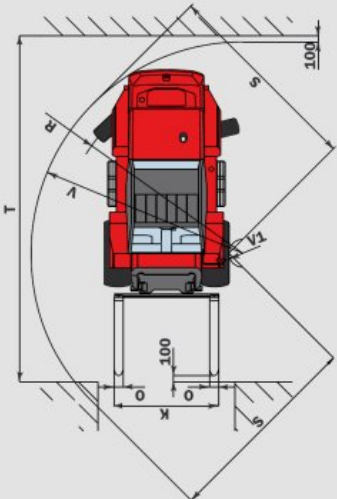
### Weight (with forks)

MC 40 T Powershift .....7555 kg  
 MC 50 T Powershift .....7825 kg



	MC 40 T Powershift	MC 50 T Powershift
A	1200	1200
B	2063	2063
C	762	772
D	3745	3755
E	4945	4955
F	1600	1600
F1	1640	1640
G	265	265
G1	365	365
G2	290	290
G3	360	360
H	2855	2855
H1	4750	4750
H*	2455	2455
H1*	5350	5350
I	920	920
J	1380	1380
K	1670	1670
L	50	60
N	1840 to 1900	
O	150	150
P1	33.5°	33.5°
P2	44°	44°
P3	37°	37°
R	2970	2970
S	3255	3255
T	5560	5570
U	2420	2420
V	3395	3395
V1	200	200
W	2060	2060
Y	15°	15°
Z	15°	15°

in mm  
 H\*-H1\* : option



### Standard equipment

- Closed cab with tinted windows
- Fabric-covered seat
- Adjustable steering column
- Heating
- Front and rear wipers and washers
- Exterior left-hand rear-view mirror
- Front and rear driving lights
- Hydraulic differential lock
- ...

### Options

- Driver protector
- Rotating beacon
- Reverse alarm
- Working light
- Wide carriages
- Various attachments such as buckets, sidsift carriage, grabs, etc.

Doc-BE-473 Ind B

The specifications contained herein shall not bind the manufacturer and are subject to change without prior notice.  
 The Manitou models presented in this brochure can be supplied with optional equipment attachments