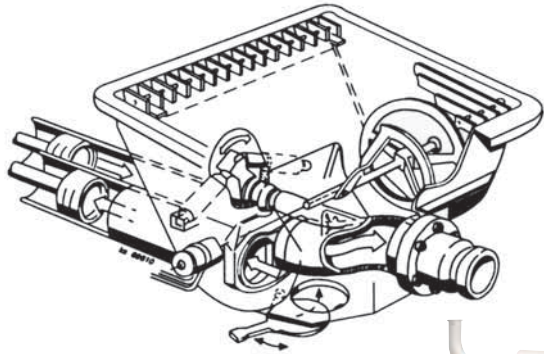


BSA 2109H - D

Output up to 105 m³/h
 Delivery pressure up to 157 bar



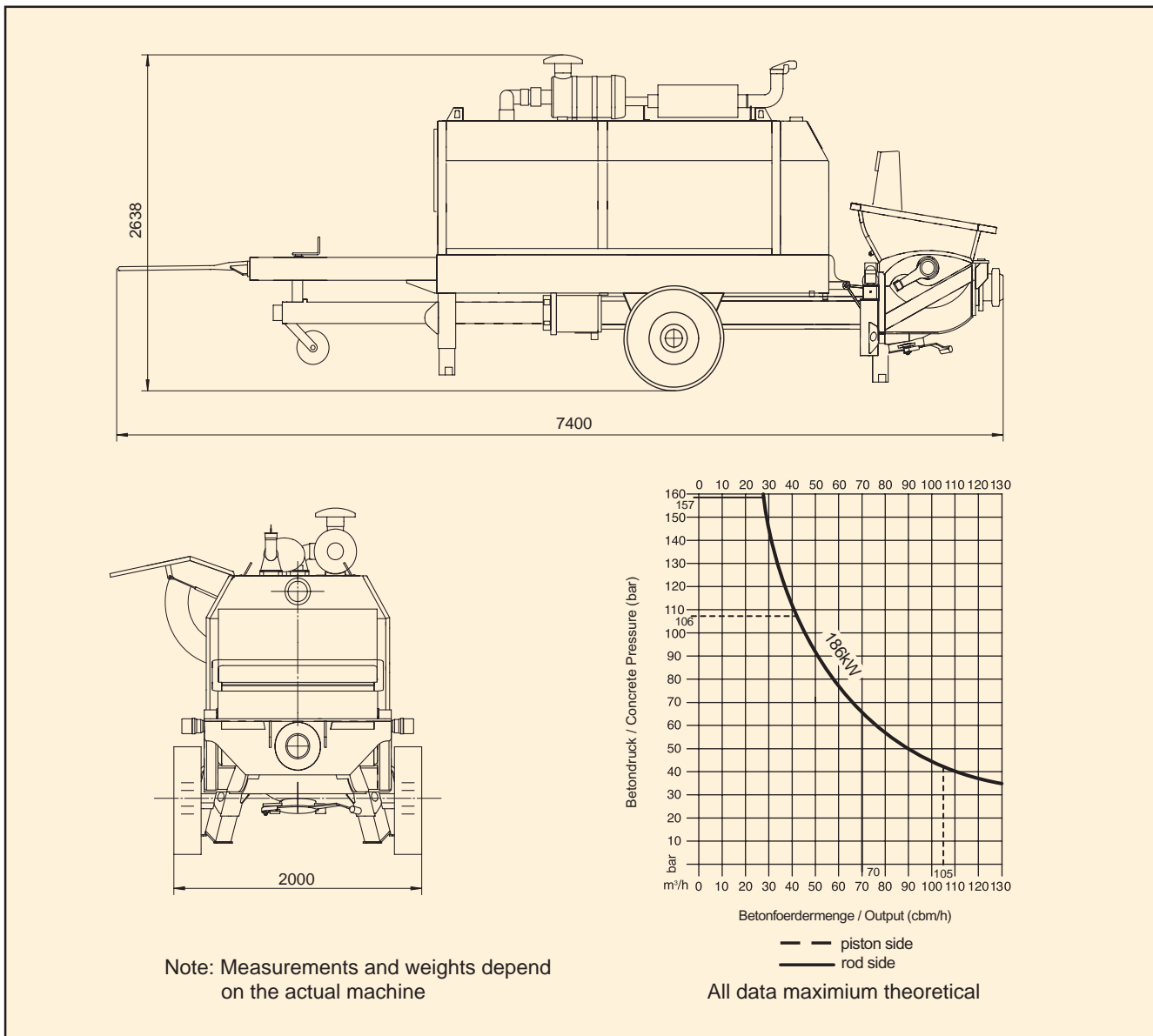
Technical data for concrete pump

	Model	BSA 2109H-D
Rod side	Output	105m ³ /h
	Delivery pressure	106 bar
	Strokes	26/min.
	Hydraulic ratio	3.0
Piston side	Output	70 m ³ /h
	Delivery pressure	157 bar
	Strokes	18/min.
	Hydraulic ratio	2.0
Delivery cyl. Ø		200 mm
Stroke of delivery cyl.		2100 mm
Strokes volume 2 cyl.		132 L
Motor power		186 kW
Hopper capacity		600 L
Pressure connection		175 mm
Filling height		approx. 1.2 m
Weight		6000 kg

Model	BSA 2109H-D
Square support leg obliquity	15°
Hydra. oil work temperature	60°C
Fan start temperature	≥ 55°C
Cut out hydra. fluid temp.	90°C
S-valve switch over time	0.2 second
Control voltage	24 V
Transfer tube	S2018 VD
Control system	FFH(Free Flow Hydraulic System)
Piston ring material	Complex organic rubber
Delivery cylinder	Horned hard-chrome layer
Output adjustable variable	from 0 to maximum
S-valve	Thick-walled special cast steel
Painting	MB 1227, chrome yellow

* Values for hydraulic fluid being fed to piston-side.
 All data maximum theoretical.
 Right to make technical amendments and interpretation reserved by Putzmeister.

Dimensions, Performance Diagram



● Standard Version/○ Optional Extras

- A set of CD (technical data + spare parts list + operator's manual).
- A set of spare parts and tools.
- F8 Chassis, with tow bar and adjustable support wheel, suitable for all kinds of trucks for towing(max.speed ≤ 8 km), and flexible move in job site.
- Manual central lubrication pump. Ensure lubrication for all active parts at S valve, plunger cylinder and hopper.
- Strengthened hopper is available for high-pressure pumping.
- Grille with approx. 70 mm clearance. Ensure the pump working safely and normally.
- Hopper with agitator, with protected hood that has place to deposit tools.
- Reinforced S valve's rotation axes, convenient for maintenance, disassemble or change by V-coupling connecting with valve.
- Both door shutters have pneumatic spring, easy for open and close.
- Stable base frame with hood; 4 square, mechanical support legs positioned at 15° angle provide stability.
- Output regulator, ensure the engine working smoothly and protect transmission pieces, and lengthen the life of the machine.
- SBU manual.
- Cable remote control.
- Flushing water pump 160l/min, 25bar.
- Rubber collar for S-Valve.
- Hopper RS 905HC with Agitator System.
- Splash guard.
- Protected cover for plunger cylinder.

