

DCD-24/17DRD Diesel Water Jet



Model	DCD-24/17DFD	
Max Pressure	248 Bar / 3600 psi	
Max Flow	17 lpm/ 4.5 gpm	
HIGH PRESSURE PUMP		
Pump Model	DBC-1510A	
Pump Type	Direct Engine, Direct Drive	
Head Material	Brass Forged	
Pump Features	Built with thermal protection and detergent injector	
DIESEL ENGINE		
Power Rate	418cc, Diesel Engine	
Start Type	Key Start	
Engine Model	186FE	
ACCESSORIES INCLUDE		
Pressure Gun & Lance	Trigger Gun, 20" Stainless Steel Lance, M22 X 1/4"QD	
Pressure Hose	ID 5/16" (8mm) x 30FT (10m), Steel Braided	
Nozzle	5 Tips 1/4"QD Nozzle, 0°, 15°, 25°, 40° And Soap Nozzle	
Weight	100 kg	
Size	80x53x64 cm	
Warranty Service:		
<ul style="list-style-type: none"> • Six (6) months for the original invoice date • Warranty is applied to products that have been, always, properly maintained and operated or used under normal operating conditions for which the product was designed. • The manufacturer warrants this product due to defective materials or workmanship. 		

Option Accessories:

Wire Steel Hose / High Pressure Hose



Item Code	Description	
HPH10M-5/16	5/16" High Pressure Hose 10 meter with connector (Max. 4310PSI)	
HPH15M-5/16	5/16" High Pressure Hose 15 meter with connector (Max. 4310PSI)	
HPH20M-5/16	5/16" High Pressure Hose 20 meter with connector (Max. 4310PSI)	

¼" Flexible High Pressure Sewer Cleaning Hose



Designed for sewer cleaning/jetting application, features flexible and resistant to kinking and abrasion, high strength POLYESTER Yarn dual braided and bonded. Light weight and snag resistant slick surface. Not use for hydraulic applications.

- Inner Tube: PE, White
- Reinforcement: POLYESTER Yarn
- Cover Colour: Blue
- Cover Material: PU

- Temperature Range:0°-60°

Stand Wand Assy



Item Code	Description	
SDWD-20"	Stand Wand Assy (4000PSI) M22 Male x ¼" QD	

5000psi High Pressure Gun with Handle Assy



Item Code	Description	Price
HPG-07WG	5000PSI High Pressure Gun with handle Assy	

6 in 1 Changeover Nozzle



Max Pressure: 3600psi/248bar

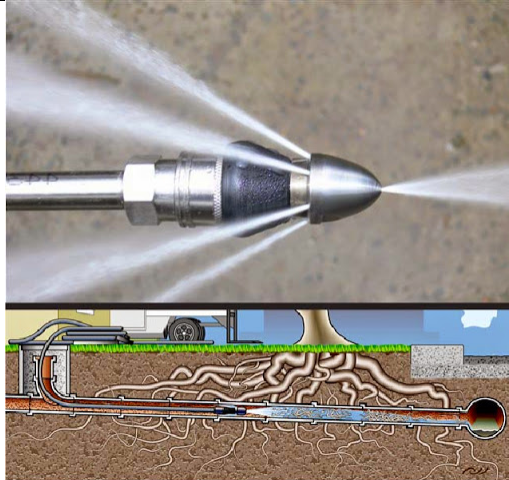
Max Temp.: 60°C/140°F

Main Material: Stainless steel

Inlet Fitting: 1/4" Quick Connect

Item Code	Description	
61NZ-AL	6 IN 1 CHANGEOVER NOZZLE	

Sewer Nozzle



1. Standard 1/4" quick connect, easy to connect to hose or rod.
2. One 0° front nozzle clear the blockage, six 30° back nozzles flush out debris loosened by the front nozzle.
3. Pressure up to 5000psi
4. The rear port drives the nozzle forward and flushes the debris, while the front port rushes in and breaks up the blockage and debris.
5. It is suitable for general water pipe flushing and cleaning. It has good cleaning effect and cleans the blocked soft sewers, such as oil stone, fine sand, fine gravel, and general waste.

Item Code	Description	
PWNZ-D06-G3/8	Size:G3/8" – (1 Forward & 6 Rear Holes)	
PWNZ-D03-G3/8	Size:G3/8" – (1 Forward & 3 Rear Holes)	

Quick Coupler Spray Nozzle



0°

Clean high areas or are as hard to reach. such as crevies in sidewalks and driceway.

15°

Clean brick, concrete and other hard surfaces with stubborn stains

25°

Clean wood , fences , painted surfaces , siding and lawn mowers

40°

Clean screens and Windows

65°

Spray on detergents

Max Pressure: 275bar/4000psi
 Nozzle Orifice: 2.0-10(gpm rate)
 Max Temp.: 60°C/140°F
 Main Material: Stainless steel
 Inlet Fitting: 1/4" Quick Connect

Item Code	Description	
10H248-19	0° Nozzle – Red	
10H248-20	15° Nozzle – Yellow	
10H248-21	25° Nozzle – Green	
10H248-22	40° Nozzle – White	
10H248-22-1	Soap Nozzle - Black	
10H248-19A	Nozzle Kit Set (5pc/set)	