

# HB30V

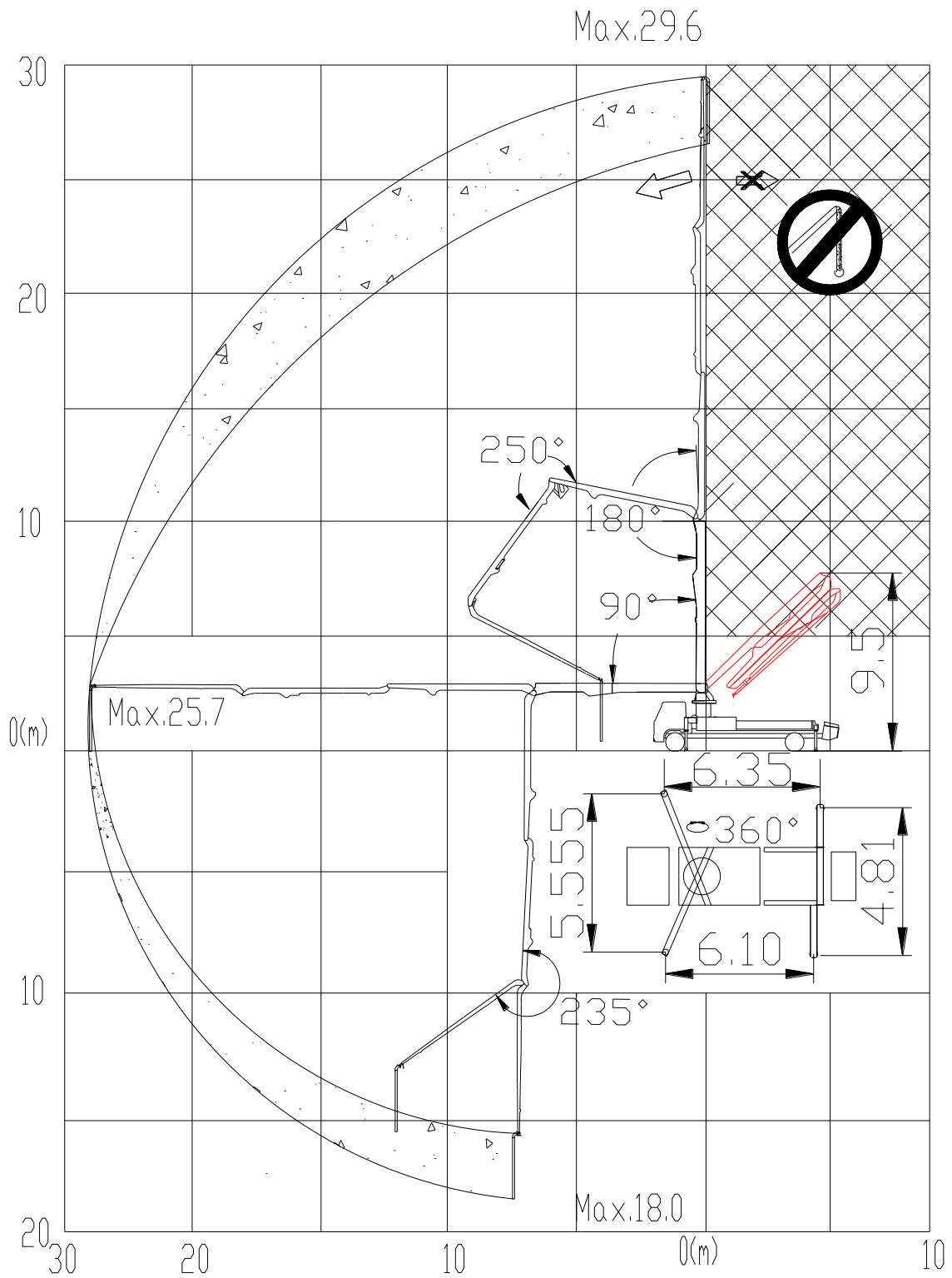
*Truck-mounted Concrete Boom Pump*



## Main Features

- Assembly on standard HOWO 4\*2 chassis
- 4 sections placing boom, "Z" folding system, FEM designed
- Fully hydraulic outrigger controls on both sides of the truck
- Front X-type outriggers and H rear outriggers
- Pumping unit with open hydraulic circuit
- Fully-hydraulic switchover system
- MPS (Micro Pressure Shock) reversing buffering technology
- ROCK valve transfer tube
- Large diameter slide valve with casting oil passage
- Intelligent electrical control system
- Remote / Manual control method for boom and pumping unit
- Centralized lubrication system for pumping unit
- Piston automatic return technology, easy to replace piston
- Main hydraulic pump overload protection technology
- Engine overload protection technology
- Engine low-speed protection technology
- Anti-tipping safety protection technology
- Lights system
- Accessories for safety
- Accessories for cleaning and pipes washing

# Operation range



# Main technical parameters

## 1. Pumping unit

Item		Parameters
Theoretical output (high/low pressure)	m <sup>3</sup> /h	100
Delivery pressure	MPa	8
Maximum aggregate diameter	mm	≤40
Concrete cylinder(diameter×stroke)	mm	Φ230×1600
Filling height	mm	1550
Hopper capacity	L	600
Hydraulic circuit		Open
Transfer tube		Rock valve

## 2. Placing boom and outrigger

Item		Parameters	
Max. vertical reach	m	29.6	
Max. horizontal distance (from center of slewing axis)	m	25.7	
Reach depth	m	18	
Pipeline diameter	mm	125	
Section numbers		4	
1 <sup>st</sup> section unfolding angle		90°	
2 <sup>nd</sup> section unfolding angle		180°	
3 <sup>rd</sup> section unfolding angle		250°	
4 <sup>th</sup> section unfolding angle		235°	
Rotating angle of the placing boom		360°	
Stabilizer span	Longitudinal span	mm	6100
	Front stabilizer transverse span	mm	5555
	Rear stabilizer transverse span	mm	4810

### 3. Technical data for travel

Chassis brand	<b>Sinotruk HOWO</b>
Chassis model	ZZ5207M521GE1
Overall dimensions (L×W×H) MM	10190×2500×3700
Overall weight /KG	20000
Axle numbers	2
Wheelbase/ mm	5200 mm
Tyre	11.00R20
Engine Model	MC07.28-50
Displacement and Max. Power of Engine(L/Kw)	6.87/203
Emission standard	Euro V

---

*Technical data and characteristics subject to modifications without notice*

XCMG IMP&EXP CO., LTD  
XUZHOU XCMG SCHWING MACHINERY CO., LTD  
No.29 Taoshan Rd, Xuzhou, Jiangsu, China  
Tel: +86 516 83111590  
Fax: +86 516 87892035  
[www.xcmg.com](http://www.xcmg.com)  
© by XCMG | All rights reserved