

7-SERIES

ELECTRIC
REACH TRUCK

7FBR



Capacity:

2,000 to 5,700 lbs.

907 to 2,600 kg

 **TOYOTA**
INDUSTRIAL EQUIPMENT

A totally new concept in reach trucks

The 7FBR utilizes Toyota's innovative Traction & Brake Control to meet today's demands for performance and operating ease while offering an even higher level of reliability.





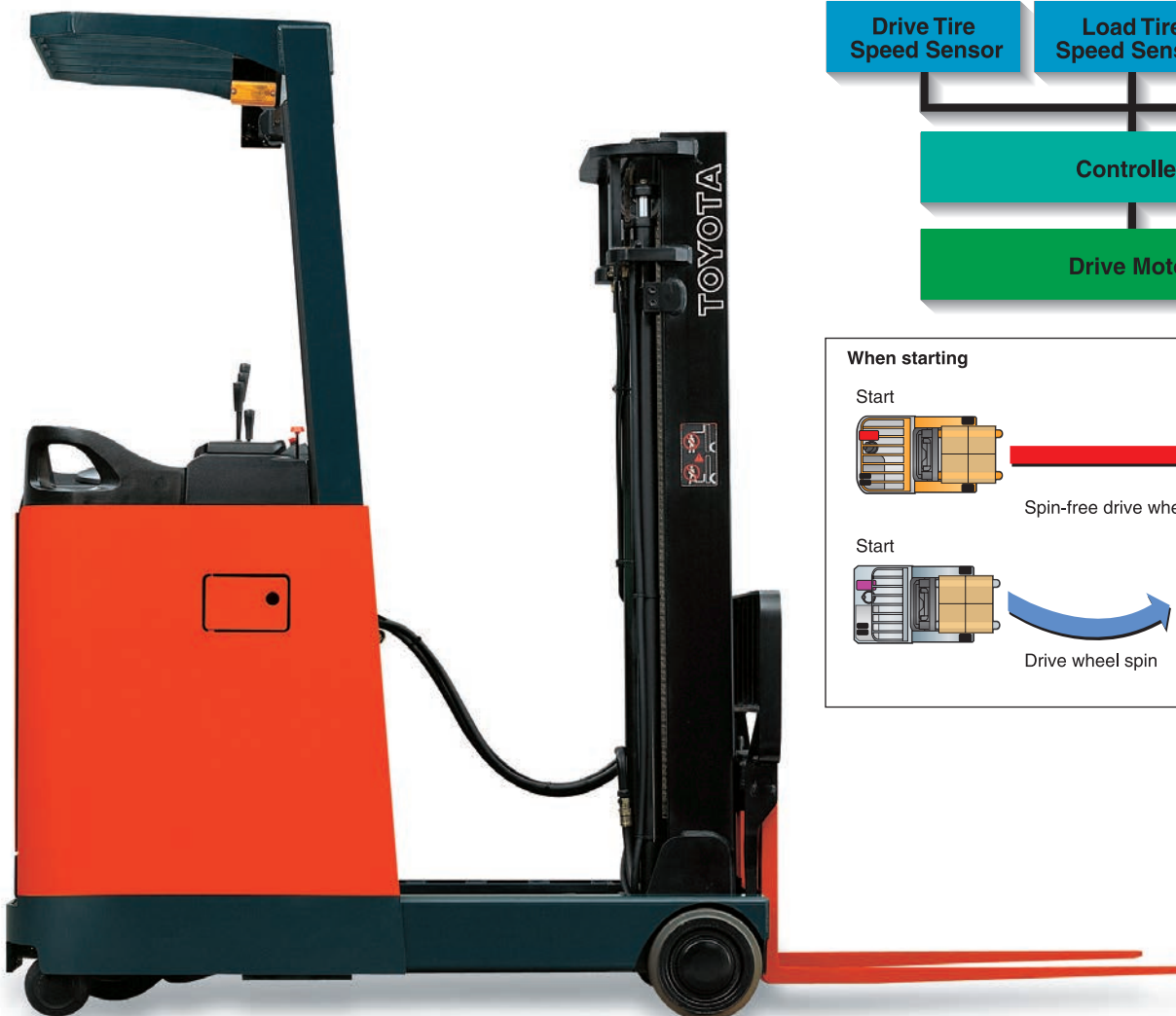
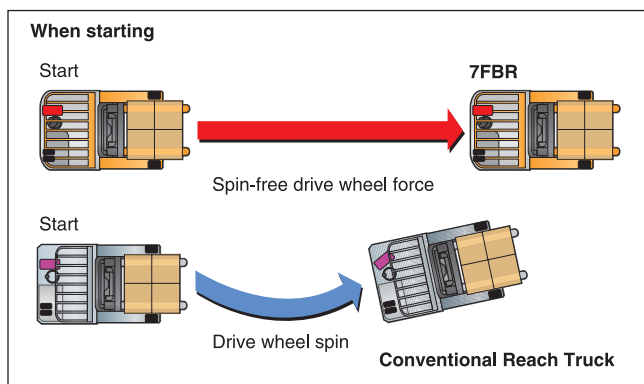
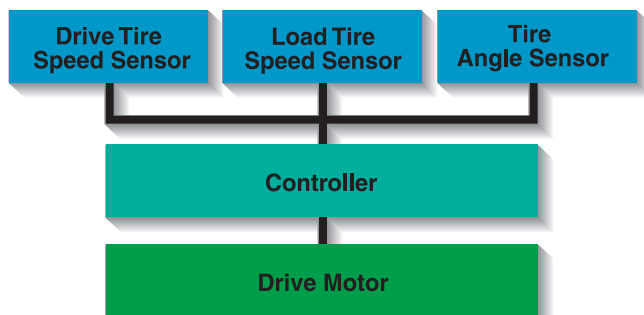
Traction & Brake Control provides a totally new concept in reach trucks

Toyota has designed the 7FBR to perform at its best in tight areas or on wet traveling surfaces. Its innovative Traction & Brake Control gives the operator an extremely high level of precise handling control.

WORLD LEADER

Traction Control

This system helps to eliminate drive wheel spinning when starting. The controller automatically adjusts the amount of power to the drive wheel to match the load and the conditions of the floor. This provides smooth, spin-free starts on almost any surface. And, less wheel spin means less tire wear so tires will last longer.

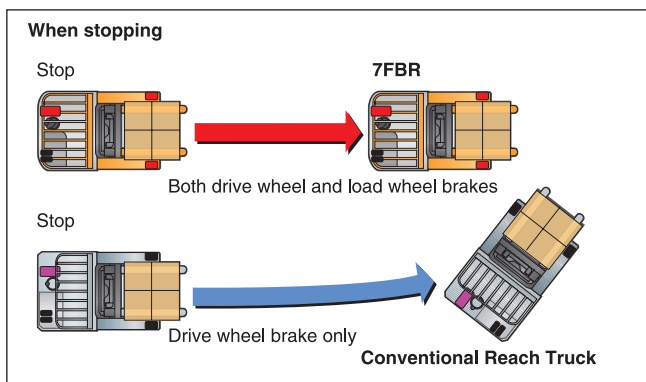
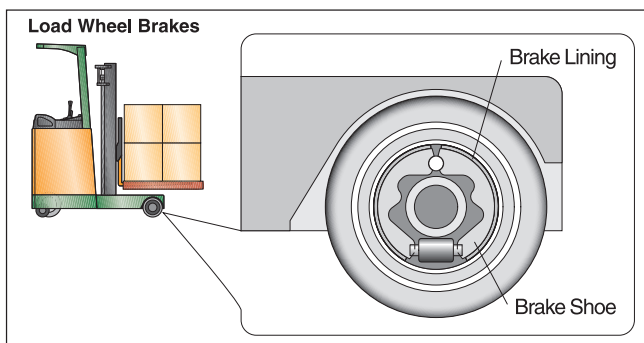


Traction & Brake Control provides dramatically enhanced maneuverability

WORLD LEADER

Front-Assist Brake System

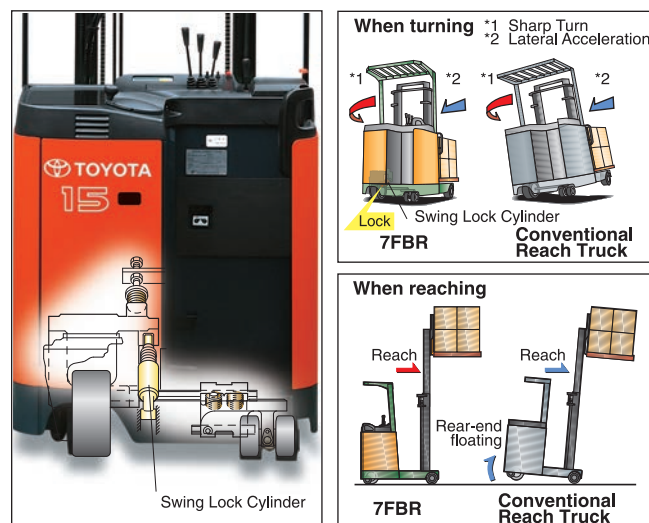
The 7FBR is equipped with computer-controlled load wheel brakes. These front-mounted brakes assist the main rear brake as needed to reduce stopping distance and rear-end swaying during braking. This new system provides high level of brake performance when carrying heavy loads and when on slippery surfaces.



WORLD LEADER

Stable Suspension Control

The 7FBR Series uses a system similar to the popular System of Active Stability (SAS) used on the 8FG/8FD and 7FB Series. It offers higher levels of stability when the reach truck is turning or when handling loads extended on its reach legs.



AC Power System

The compact-yet-powerful AC drive motor provides smooth starts without complicated accelerator operation. Since this motor has no brushes or contactors, it is virtually maintenance free.

Traction & Brake Control provides totally improved operability.

The 7FBR offers operators exactly what they want: superior comfort and optimal control. Comfort helps fight operator fatigue while the responsive controls boost operating efficiency.

The result is more productivity from much less effort. The 7FBR is equipped with the following features to help boost both productivity and comfort.

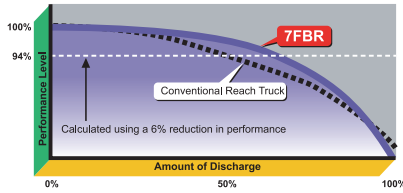
Customize Performance to Load Handling Conditions with Power Select Function

The operator can select from different travel and load-handling modes to match reach truck performance to the operating conditions. The reach truck can now provide the best performance for the job while using less of the charge in the battery.



AC Power Control Extends “Just-Charged” Performance with Power Keep Function

The Power Keep Function boosts performance when the battery charge is low to extend the efficient performance time of the forklift. This means the reach truck can maintain its “just charged” performance longer.



AC Power Control Provides Three Types of Regenerative Systems



The 7FBR has three types of regenerative systems for collecting the power during braking and reusing it to extend operating time.

When accelerator lever is off

Regenerative braking occurs when the accelerator lever is moved to the neutral position while the reach truck is traveling.

During switch back

Regenerative braking occurs during switchback operations.

During braking

Regenerative braking occurs when the brake pedal is released (brake engaged) during travel.



More Features

Low-Height Floor

A new suspension design has helped to provide a low floor height. Operators who must get on and off of the reach truck often will appreciate this low floor height.



Small-Diameter Steering Wheel

The steering system uses an integrated Electronic Power Steering (EPS) system to provide maximum steering ease from minimum effort. The small diameter steering wheel enhances maneuverability.



Multifunction Lever (Optional)

One lever controls travel, load handling, horn and side-shift operations (when optional factory side-shift is mounted). This makes operation easier and helps to reduce operator-fatigue.



Waist Support

The waist support has a built-in assist grip. The waist support helps to hold the operator in place while traveling, especially during turning, while the assist grip makes entry and exit easier.

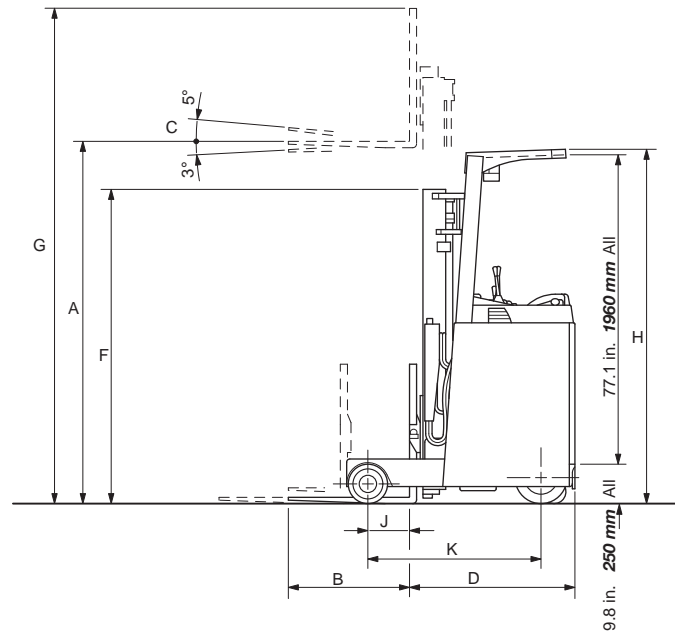
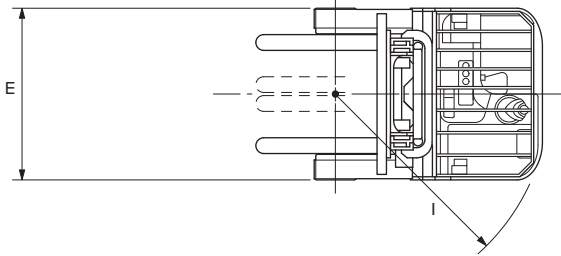


Easy-Down System (V, SV Masts)

Empty forks being lowered are slowed just before they contact the ground. This helps reduce impact and the noise it causes.



2,000 to 5,700 lbs. 907 to 2,600 kg • Standard Features



- Traction and brake control
(All models: Traction control; Front assist brake system; Stable suspension control)
- AC drive motor
- Three types of regenerative systems (braking; accelerator released; switchback)
- 48 volt system
- Three-way valve
- (2) Headlights overhead guard mounted
- Load backrest (V, SV and FSV) [Height 33.5 in. / **850 mm** (7FBR 10,13,15,18, 7FBR 20,25)] [Height 37.4 in. / **950 mm** (7FRB30)]
- Easy down system (V and SV mast)
- Digital multifunction display (includes power keep function; power select function; analyzer mode; maximum travel speed limiter; 2 speed travel speed control; over speed alarm; lift interrupt; overheat warning; drive and pump motor operation; hour meter; battery capacity indicator; speedometer)
- Electric horn
- Emergency unplug lever
- Electric power steering (EPS) with small diameter steering wheel
- Adjustable waist support with assist grip
- Arm pad
- Low floor step height
- Battery roll-out stand
- Wheel indicator
- Urethane drive, castor and load tires

OPTIONAL FEATURES

- Cold storage model
- Dust proof model
- Rust proof model
- Multifunction control handle (7FBR 15/18 only)
- Side shifter
- Strobe light
- Four-way valve

2,000 to 5,700 lbs. 907 to 2,600 kg • Specifications

MAIN VEHICLE SPECIFICATIONS

Manufacturer			TOYOTA	TOYOTA	TOYOTA	TOYOTA	
Model			7FBR10	7FBR13	7FBR15	7FBR18	
Load Capacity	lb kg		1920 871	2400 1000	2870 1302	3440 1560	
Load Centre	in mm		24 600	24 600	24 600	24 600	
Power Type			Battery	Battery	Battery	Battery	
Operator Position			Stand On	Stand On	Stand On	Stand On	
Tire Type Front/Rear			Cushion	Cushion	Cushion	Cushion	
Wheels(x=driven) Front/Rear			2/1x+2	2/1x+2	2/1x+2	2/1x+2	
A Max.Fork Height (MFH)	in mm		118 3000	118 3000	118 3000	118 3000	
Free Lift	in mm		3.9 100	3.9 100	4.1 105	4.1 105	
B Fork Size T x W x L	in mm		1.2x4x30.3 30x100x770	1.2x4x33.5 30x100x850	1.4x4x36.2 35x100x920	1.4x4x36.2 35x100x920	
C Tilt Range UP/DOWN deg			5/3	5/3	5/3	5/3	
D Length to Fork Face	in mm		41.3 1050	41.3 1050	45.5 1155	45.5 1155	
E Overall Width	in mm		42.9 1090	42.9 1090	42.9 1090	42.9 1090	
F Mast Lowered Height	in mm		78.5 1995	78.5 1995	78.5 1995	78.5 1995	
G Mast Extended Height	in mm		151.5 3850	151.5 3850	151.5 3850	151.5 3850	
H Overhead Guard Height	in mm		88.5 2250	88.5 2250	88.5 2250	88.5 2250	
I Turn Radius (Outside)	in mm		52 1320	58 1470	61.4 1560	67.3 1710	
J Load Distance (Centerline of front axle to front face of forks)	in mm		10.5 265	16.3 415	16.1 410	22 560	
Right Angle Stacking Aisle Width (With pallets 43.3x43.3 1100x1100 *)	in mm		91.3 2320	92.5 2350	96.1 2440	97.6 2480	
Speeds	Travel, Max. (FWD/RVS)	Full Load	mph km/h	5.9 9.5	5.9 9.5	5.9 9.5	5.9 9.5
		No Load	mph km/h	6.5 10.5	6.5 10.5	6.5 10.5	6.5 10.5
	Lifting	Full Load	fpm mm/sec	68.6 350	62.7 320	60.7 310	58.8 300
		No Load	fpm mm/sec	106 540	106 540	106 540	106 540
	Lowering	Full Load	fpm mm/sec	98 500	98 500	98 500	98 500
		No Load	fpm mm/sec	108 550	108 550	108 550	108 550
Traction	3-Minute Ratings Full Load / No Load	N	<4500/5600>	<5300/6000>	<6000/6300>	<6000/6300>	
		N	<4500/5600>	<5300/6000>	<6000/6300>	<6000/6300>	
	60-Minute Ratings Full Load / No Load	N	<2900/3100>	<2800/3100>	<2400/2700>	<2300/2700>	
Gradeability*	Full Load/ No Load	3-Minute Ratings	% (tanø)	19/32	18/31	17/30	15/28
		5-Minute Ratings	% (tanø)	19/32	18/31	17/30	15/28
		60-Minute Ratings	% (tanø)	12/20	11/19	8/15	7/14
Total Weight Without Battery and Case		lb kg	3704 1680	3748 1700	3814 1730	3990 1810	
Weight Distribution (With STD Battery)	Full Load	Front	lb kg	5644 2560	6283 2850	7121 3230	7914 3590
		Rear	lb kg	1036 470	992 450	1014 460	1058 480
	No Load	Front	lb kg	1675 760	1521 690	1675 760	1609 730
		Rear	lb kg	2800 1270	2998 1360	3152 1430	3395 1540
Tires	Number	Front/Rear		2/1+2	2/1+2	2/1+2	2/1+2
	Size	Front, Load		260 x 120	260 x 120	254 x 120	254 x 120
Rear, Drive			330 x 145	330 x 145	330 x 145	330 x 145	
K Wheelbase	in mm		43.3 1100	49.2 1250	53.1 1350	59.1 1500	
Tread	Front	in mm	38.2 970	38.2 970	38.2 970	38.2 970	
	Rear	in mm	25.6 650	25.6 650	25.6 650	25.6 650	
Underclearance	Min. with Load	in mm	2.8 70	2.8 70	2.8 70	2.8 70	
	Center of Wheelbase	in mm	3.9 98	3.9 98	3.9 98	3.9 98	
Brake	Front		Hydraulic	Hydraulic	Hydraulic	Hydraulic	
	Service (Foot)		Mechanical	Mechanical	Mechanical	Mechanical	
	Parking		Mechanical	Mechanical	Mechanical	Mechanical	
Battery	Voltage/Capacity S TD	V/AH		48/201	48/201	48/280	48/280
		High		48/225	48/225	48/370	48/370
	5-hour ratings)			48/225	48/225	48/370	48/370
	Weight (STD Capacity Type)	lb kg	770 350	770 350	1025 465	1025 465	
Electric Motors	Drive	SAE HP kW	6.5 4.9	6.5 4.9	6.5 4.9	6.5 4.9	
	Load Handling	SAE HP kW	8.6 6.5	8.6 6.5	10.6 8.0	10.6 8.0	
	Power Steering	SAE HP kW	0.34 .26	0.34 .26	0.34 .26	0.34 .26	
Control Type	Drive		Transistor inverter	Transistor inverter	Transistor inverter	Transistor inverter	
	Load Handling		Transistor chopper	Transistor chopper	Transistor chopper	Transistor chopper	
	Power Steering		Transistor chopper	Transistor chopper	Transistor chopper	Transistor chopper	
Operating	For Attachments	MPa kg/cm2 <psi>	12.2 126 <1800>	12.2 126 <1800>	16.7 172 <2400>	16.7 172 <2400>	
Battery Compartment Size		in mm	39.6 x 14.8 x 22.4 1005 x 376 x 569				

2,000 to 5,700 lbs. 907 to 2,600 kg • Specifications

MAIN VEHICLE SPECIFICATIONS

Manufacturer			TOYOTA	TOYOTA	TOYOTA	TOYOTA	TOYOTA	
Model			7FBR20	7FBRS20	7FBR25	7FBRS25	7FBR30	
Load Capacity	lb kg		3830 1738	3830 1738	4800 2178	4800 2178	5770 2618	
Load Centre	in mm		24 600	24 600	24 600	24 600	24 600	
Power Type			Battery	Battery	Battery	Battery	Battery	
Operator Position			Stand On	Stand On	Stand On	Stand On	Stand On	
Tire Type Front/Rear			Cushion	Cushion	Cushion	Cushion	Cushion	
Wheels(x=driven) Front/Rear			2/1x+2	2/1x+2	2/1x+2	2/1x+2	2/1x+2	
A Max.Fork Height (MFH)	in mm		118 3000	157 4000	118 3000	157 4000	118 3000	
Free Lift	in mm		4.3 110	4.3 110	4.3 110	4.3 110	5.3 135	
B Fork Size T x W x L	in mm		1.5x4.8x36.2 38x122x920	1.5x4.8x36.2 38x122x920	1.7x4.8x36.2 42x122x920	1.7x4.8x36.2 42x122x920	1.8x4.8x42.1 45x122x1070	
C Tilt Range UP/DOWN deg			5/3	5/3	5/3	5/3	5/3	
D Length to Fork Face	in mm		49.2 1250	49.2 1250	50 1270	50 1270	52 1320	
E Overall Width	in mm		46.8 1190	46.8 1190	46.8 1190	46.8 1190	48.8 1240	
F Mast Lowered Height	in mm		78.5 1995	100.5 2555	78.5 1995	100.5 2555	78.5 1995	
G Mast Extended Height	in mm		151.5 3850	190.8 4850	151.5 3850	190.8 4850	155.4 3950	
H Overhead Guard Height	in mm		91.6 2330	91.6 2330	91.6 2330	91.6 2330	91.6 2330	
I Turn Radius (Outside)	in mm		68.8 1750	68.8 1750	76.7 1950	76.7 1950	78.7 2000	
J Load Distance (Centerline of front axle to front face of forks)	in mm		18.9 480	18.9 480	26 660	26 660	26 660	
Right Angle Stacking Aisle Width (With pallets 43.3x43.3 1100x1100 *)	in mm		101.5 2580	101.5 2580	104.2 2650	104.2 2650	106.2 2700	
Speeds	Travel, Max. (FWD/RVS)	Full Load	mph km/h	6.2 10	6.2 10	5.9 9.5	5.9 9.5	5.6 9
		No Load	mph km/h	7.1 11.5	7.1 11.5	7.1 11.5	7.1 11.5	9.5 11
	Lifting	Full Load	fpm mm/sec	58.8 300	58.8 300	54.9 280	54.9 280	43.1 220
		No Load	fpm mm/sec	98 500	98 500	98 500	98 500	82.3 420
	Lowering	Full Load	fpm mm/sec	98 500	98 500	98 500	98 500	98 500
		No Load	fpm mm/sec	88.2 450	88.2 450	88.2 450	88.2 450	88.2 450
Traction	3-Minute Ratings Full Load / No Load	N	<9700/10000>	<9700/10000>	<9600/10000>	<9600/10000>	<9500/10000>	
	5-Minute Ratings Full Load / No Load	N	<9700/10000>	<9700/10000>	<9600/10000>	<9600/10000>	<9500/10000>	
	60-Minute Ratings Full Load / No Load	N	<2600/3000>	<2600/3000>	<2500/2900>	<2500/2900>	<2400/2900>	
Gradeability*	3-Minute Ratings Full Load/ No Load	% (tanø)	17/30	17/30	15/28	15/28	13/26	
	5-Minute Ratings	% (tanø)	17/30	17/30	15/28	15/28	13/26	
	60-Minute Ratings	% (tanø)	6/12	5/11	5/11	4/10	4/9	
Total Weight Without Battery and Case		lb kg	4145 1880	5093 2310	5005 2270	5148 2335	5600 2540	
Weight Distribution (With STD Battery)	Full Load	Front	lb kg	9083 4120	9304 4220	10384 4710	10582 4800	12346 5600
		Rear	lb kg	1367 620	1500 680	1433 650	1587 720	1433 650
	No Load	Front	lb kg	2050 930	2183 990	1962 890	2094 950	2337 1060
		Rear	lb kg	3990 1810	4211 1910	4343 1970	4564 2070	4828 2190
Tires	Number	Front/Rear		2/1+2	2/1+2	2/1+2	2/1+2	
	Size	Front, Load		260 x 120	260 x 120	254 x 120	254 x 120	
		Rear, Drive		330 x 145	330 x 145	330 x 145	330 x 145	
K Wheelbase	in mm		59.1 1500	59.1 1500	66.9 1700	66.9 1700	68.8 1750	
Tread	Front	in mm	41.9 1065	41.9 1065	41.9 1065	41.9 1065	42.9 1090	
	Rear	in mm	27.1 690	27.1 690	27.1 690	27.1 690	27.1 690	
Underclearance	Min. Suspension	in mm	2.8 70 (No Load)	2.8 70 (No Load)	2.8 70 (Full Load)	2.8 70 (Full Load)	2.8 70 (Full Load)	
	Center of Wheelbase	in mm	3.9 98 (No Load)	3.9 98 (No Load)	3.9 98 (Full Load)	3.9 98 (Full Load)	3.9 98 (Full Load)	
Brake	Front		Hydraulic	Hydraulic	Hydraulic	Hydraulic	Hydraulic	
	Service (Foot)		Mechanical	Mechanical	Mechanical	Mechanical	Mechanical	
	Parking		Mechanical	Mechanical	Mechanical	Mechanical	Mechanical	
Battery	Voltage/Capacity	S TD	V/AH	48/201	48/201	48/280	48/280	48/280
	5-hour ratings)	High	V/AH	48/225	48/225	48/370	48/370	-----
	Weight (STD Capacity Type)		lb kg	1300 590	1300 590	1300 590	1510 685	1565 710
Electric Motors	Drive	SAE HP kW	6.9 5.2	6.9 5.2	6.9 5.2	6.9 5.2	6.9 5.2	
	Load Handling	SAE HP kW	14.6 11	14.6 11	14.6 11	14.6 11	14.6 11	
	Power Steering	SAE HP kW	0.46 0.35	0.46 0.35	0.46 0.35	0.46 0.35	0.46 0.35	
Control Type	Drive		Transistor inverter	Transistor inverter	Transistor inverter	Transistor inverter	Transistor inverter	
	Load Handling		Transistor chopper	Transistor chopper	Transistor chopper	Transistor chopper	Transistor chopper	
	Power Steering		Transistor chopper	Transistor chopper	Transistor chopper	Transistor chopper	Transistor chopper	
Operating	For Attachments	MPa kg/cm2 <psi>	18.1 186.9 <2600>	18.1 186.9 <2600>	18.1 186.9 <2600>	18.1 186.9 <2600>	18.1 186.9 <2600>	
Battery Compartment Size		in mm	45.3 x 16 x 22.6 1152 x 407 x 575					

2,000 to 5,700 lbs. 907 to 2,600 kg • Mast Specifications

7FBR10 • Mast Specifications

Mast Type	Maximum Fork Height	Overall Height				Free Lift		Tilt Range		Load Capacity at 24 in./600 mm Load Centre
		Lowered	Extended		Without Load Backrest	With Standard Load Backrest	Down	Up		
			Without Load Backrest	With Standard Load Backrest					deg	
	in. mm	in. mm	in. mm	in. mm	in. mm	in. mm			Lbs. kg	
Wide Visible Mast (V)	98 2500	68 1745		132 3350		3.9 100	3	5	1920 871	
	106 2700	72 1845		140 3550		3.9 100	3	5	1920 871	
	118 3000	78 1995		151 3850		3.9 100	3	5	1920 871	
	130 3300	84 2145		163 4150		3.9 100	3	5	1920 871	
	138 3500	88 2245		171 4350		3.9 100	3	5	1920 871	
	145 3700	92 2345		179 4550		3.9 100	3	5	1920 871	
	157 4000	98 2495		191 4850		3.9 100	3	5	1920 871	
	177 4500	112 2845		210 5350		3.9 100	3	5	1820 825	
	197 5000	122 3095		230 5850		3.9 100	3	5	1720 780	
Wide Visible Mast (SV)	98 2500	68 1745		132 3350		16 410	3	5	1920 871	
	106 2700	72 1845		140 3550		16 410	3	5	1920 871	
	118 3000	78 1995		151 3850		16 410	3	5	1920 871	
	130 3300	84 2145		163 4150		16 410	3	5	1920 871	
	138 3500	88 2245		171 4350		16 410	3	5	1920 871	
	145 3700	92 2345		179 4550		16 410	3	5	1920 871	
	157 4000	98 2495		191 4850		16 410	3	5	1920 871	
	177 4500	112 2845		210 5350		16 410	3	5	1820 825	
	197 5000	122 3095		230 5850		16 410	3	5	1720 780	
Wide Visible Full-Free Lift 2-Stage Mast (FV)	98 2500	68 1745	122 3115	132 3350	37 945	35 890	3	5	1920 871	
	106 2700	72 1845	130 3315	140 3550	41 1045	39 990	3	5	1920 871	
	118 3000	78 1995	142 3615	151 3850	47 1195	45 1140	3	5	1920 871	
	130 3300	84 2145	154 3915	163 4150	53 1345	51 1290	3	5	1920 871	
	138 3500	88 2245	162 4115	171 4350	57 1445	54 1390	3	5	1920 871	
	145 3700	92 2345	170 4315	179 4550	61 1545	58 1490	3	5	1920 871	
	157 4000	98 2495	181 4615	191 4850	66 1695	64 1640	3	5	1920 871	
Wide Visible Full-Free Lift 3-Stage Mast (FSV)	145 3700	70 1795		179 4550		37 940	3	5	1920 871	
	157 4000	74 1895		191 4850		41 1040	3	5	1920 871	
	169 4300	78 1995		203 5150		45 1140	3	5	1820 825	
	177 4500	81 2065		210 5350		47 1210	3	5	1720 780	
	185 4700	84 2145		218 5550		51 1290	3	5	1720 780	
	197 5000	88 2245		230 5850		54 1390	3	5	1630 739	
	216 5500	94 2405		250 6350		61 1545	3	5	1340 608	
236 6000	102 2595		269 6850		68 1740	3	5	1050 476		

7FBR13 • Mast Specifications

Mast Type	Maximum Fork Height	Overall Height				Free Lift		Tilt Range		Load Capacity at 24 in./600 mm Load Centre
		Lowered	Extended		Without Load Backrest	With Standard Load Backrest	Down	Up		
			Without Load Backrest	With Standard Load Backrest					deg	
	in. mm	in. mm	in. mm	in. mm	in. mm	in. mm			Lbs. kg	
Wide Visible Mast (V)	98 2500	68 1745		132 3350		3.9 100	3	5	2400 1088	
	106 2700	72 1845		140 3550		3.9 100	3	5	2400 1088	
	118 3000	78 1995		151 3850		3.9 100	3	5	2400 1088	
	130 3300	84 2145		163 4150		3.9 100	3	5	2400 1088	
	138 3500	88 2245		171 4350		3.9 100	3	5	2400 1088	
	145 3700	92 2345		179 4550		3.9 100	3	5	2400 1088	
	157 4000	98 2495		191 4850		3.9 100	3	5	2400 1088	
	177 4500	112 2845		210 5350		3.9 100	3	5	2210 1002	
	197 5000	122 3095		230 5850		3.9 100	3	5	2020 916	
Wide Visible Mast (SV)	98 2500	68 1745		132 3350		16 410	3	5	2400 1088	
	106 2700	72 1845		140 3550		16 410	3	5	2400 1088	
	118 3000	78 1995		151 3850		16 410	3	5	2400 1088	
	130 3300	84 2145		163 4150		16 410	3	5	2400 1088	
	138 3500	88 2245		171 4350		16 410	3	5	2400 1088	
	145 3700	92 2345		179 4550		16 410	3	5	2400 1088	
	157 4000	98 2495		191 4850		16 410	3	5	2400 1088	
	177 4500	112 2845		210 5350		16 410	3	5	2210 1002	
	197 5000	122 3095		230 5850		16 410	3	5	2020 916	
Wide Visible Full-Free Lift 2-Stage Mast (FV)	98 2500	68 1745	122 3115	132 3350	37 945	35 890	3	5	2400 1088	
	106 2700	72 1845	130 3315	140 3550	41 1045	39 990	3	5	2400 1088	
	118 3000	78 1995	142 3615	151 3850	47 1195	45 1140	3	5	2400 1088	
	130 3300	84 2145	154 3915	163 4150	53 1345	51 1290	3	5	2400 1088	
	138 3500	88 2245	162 4115	171 4350	57 1445	54 1390	3	5	2400 1088	
	145 3700	92 2345	170 4315	179 4550	61 1545	58 1490	3	5	2400 1088	
	157 4000	98 2495	181 4615	191 4850	66 1695	64 1640	3	5	2400 1088	
Wide Visible Full-Free Lift 3-Stage Mast (FSV)	145 3700	70 1795		179 4550		37 940	3	5	2400 1088	
	157 4000	74 1895		191 4850		41 1040	3	5	2400 1088	
	169 4300	78 1995		203 5150		45 1140	3	5	2310 1048	
	177 4500	81 2065		210 5350		47 1210	3	5	2210 1002	
	185 4700	84 2145		218 5550		51 1290	3	5	2210 1002	
	197 5000	88 2245		230 5850		54 1390	3	5	2020 916	
	216 5500	94 2405		250 6350		61 1545	3	5	1630 739	
236 6000	102 2595		269 6850		68 1740	3	5	1250 567		

NOTE: Height of standard load backrest is 33 in. (850 mm)

2,000 to 5,700 lbs. 907 to 2,600 kg • Mast Specifications

7FBR15 • Mast Specifications

Mast Type	Maximum Fork Height	Overall Height			Free Lift		Tilt Range		Load Capacity at 24 in./600 mm Load Centre
		Lowered	Extended		Without Load Backrest	With Standard Load Backrest	Down	Up	
			Without Load Backrest	With Standard Load Backrest					
	in. mm	in. mm	in. mm	in. mm	in. mm	in. mm			Lbs. kg
Wide Visible Mast (V)	98 2500	68 1745		132 3350		4.1 105	3	5	2870 1302
	106 2700	72 1845		140 3550		4.1 105	3	5	2870 1302
	118 3000	78 1995		151 3850		4.1 105	3	5	2870 1302
	130 3300	84 2145		163 4150		4.1 105	3	5	2870 1302
	138 3500	88 2245		171 4350		4.1 105	3	5	2870 1302
	145 3700	92 2345		179 4550		4.1 105	3	5	2870 1302
	157 4000	98 2495		191 4850		4.1 105	3	5	2870 1302
	177 4500	112 2845		210 5350		4.1 105	3	5	2790 1265
	197 5000	122 3095		230 5850		4.1 105	3	5	2690 1220
Wide Visible Mast (SV)	98 2500	68 1745		132 3350		16 415	3	5	2870 1302
	106 2700	72 1845		140 3550		16 415	3	5	2870 1302
	118 3000	78 1995		151 3850		16 415	3	5	2870 1302
	130 3300	84 2145		163 4150		16 415	3	5	2870 1302
	138 3500	88 2245		171 4350		16 415	3	5	2870 1302
	145 3700	92 2345		179 4550		16 415	3	5	2870 1302
	157 4000	98 2495		191 4850		16 415	3	5	2870 1302
	177 4500	112 2845		210 5350		16 415	3	5	2790 1265
	197 5000	122 3095		230 5850		16 415	3	5	2690 1220
Wide Visible Full-Free Lift 2-Stage Mast (FV)	98 2500	68 1745	122 3115	132 3350	37 945	35 895	3	5	2870 1302
	106 2700	72 1845	130 3315	140 3550	41 1045	39 995	3	5	2870 1302
	118 3000	78 1995	142 3615	151 3850	47 1195	45 1145	3	5	2870 1302
	130 3300	84 2145	154 3915	163 4150	53 1345	51 1295	3	5	2870 1302
	138 3500	88 2245	162 4115	171 4350	57 1445	55 1395	3	5	2870 1302
	145 3700	92 2345	170 4315	179 4550	61 1545	59 1495	3	5	2870 1302
	157 4000	98 2495	181 4615	191 4850	66 1695	65 1645	3	5	2870 1302
Wide Visible Full-Free Lift 3-Stage Mast (FSV)	145 3700	70 1795		179 4550		37 945	3	5	2870 1302
	157 4000	74 1895		191 4850		41 1045	3	5	2870 1302
	169 4300	78 1995		203 5150		45 1145	3	5	2870 1302
	177 4500	81 2065		210 5350		48 1215	3	5	2790 1265
	185 4700	84 2145		218 5550		51 1295	3	5	2790 1265
	197 5000	88 2245		230 5850		55 1395	3	5	2690 1220
	216 5500	94 2405		250 6350		61 1550	3	5	2210 1002
236 6000	102 2595		269 6850		68 1745	3	5	1720 780	

7FBR18 • Mast Specifications

Mast Type	Maximum Fork Height	Overall Height			Free Lift		Tilt Range		Load Capacity at 24 in./600 mm Load Centre
		Lowered	Extended		Without Load Backrest	With Standard Load Backrest	Down	Up	
			Without Load Backrest	With Standard Load Backrest					
	in. mm	in. mm	in. mm	in. mm	in. mm	in. mm			Lbs. kg
Wide Visible Mast (V)	98 2500	68 1745		132 3350		4.1 105	3	5	3440 1560
	106 2700	72 1845		140 3550		4.1 105	3	5	3440 1560
	118 3000	78 1995		151 3850		4.1 105	3	5	3440 1560
	130 3300	84 2145		163 4150		4.1 105	3	5	3440 1560
	138 3500	88 2245		171 4350		4.1 105	3	5	3440 1560
	145 3700	92 2345		179 4550		4.1 105	3	5	3440 1560
	157 4000	98 2495		191 4850		4.1 105	3	5	3440 1560
	177 4500	112 2845		210 5350		4.1 105	3	5	3270 1483
	197 5000	122 3095		230 5850		4.1 105	3	5	2980 1351
Wide Visible Mast (SV)	98 2500	68 1745		132 3350		16 415	3	5	3440 1560
	106 2700	72 1845		140 3550		16 415	3	5	3440 1560
	118 3000	78 1995		151 3850		16 415	3	5	3440 1560
	130 3300	84 2145		163 4150		16 415	3	5	3440 1560
	138 3500	88 2245		171 4350		16 415	3	5	3440 1560
	145 3700	92 2345		179 4550		16 415	3	5	3440 1560
	157 4000	98 2495		191 4850		16 415	3	5	3440 1560
	177 4500	112 2845		210 5350		16 415	3	5	3270 1483
	197 5000	122 3095		230 5850		16 415	3	5	2980 1351
Wide Visible Full-Free Lift 2-Stage Mast (FV)	98 2500	68 1745	122 3115	132 3350	37 945	35 895	3	5	3440 1560
	106 2700	72 1845	130 3315	140 3550	41 1045	39 995	3	5	3440 1560
	118 3000	78 1995	142 3615	151 3850	47 1195	45 1145	3	5	3440 1560
	130 3300	84 2145	154 3915	163 4150	53 1345	51 1295	3	5	3440 1560
	138 3500	88 2245	162 4115	171 4350	57 1445	55 1395	3	5	3440 1560
	145 3700	92 2345	170 4315	179 4550	61 1545	59 1495	3	5	3440 1560
	157 4000	98 2495	181 4615	191 4850	66 1695	65 1645	3	5	3440 1560
Wide Visible Full-Free Lift 3-Stage Mast (FSV)	145 3700	70 1795		179 4550		37 945	3	5	3440 1560
	157 4000	74 1895		191 4850		41 1045	3	5	3440 1560
	169 4300	78 1995		203 5150		45 1145	3	5	3360 1524
	177 4500	81 2065		210 5350		48 1215	3	5	3170 1438
	185 4700	84 2145		218 5550		51 1295	3	5	3170 1438
	197 5000	88 2245		230 5850		55 1395	3	5	2980 1351
	216 5500	94 2405		250 6350		61 1550	3	5	2600 1179
236 6000	102 2595		269 6850		68 1745	3	5	2020 916	

2,000 to 5,700 lbs. 907 to 2,600 kg • Mast Specifications

7FBR20 • Mast Specifications

Mast Type	Maximum Fork Height	Overall Height			Free Lift		Tilt Range		Load Capacity at 24 in./600 mm Load Centre Lbs. kg
		Lowered	Extended		Without Load Backrest	With Standard Load Backrest	Down deg	Up deg	
			Without Load Backrest	With Standard Load Backrest					
in. mm	in. mm	in. mm	in. mm	in. mm	in. mm	deg	deg	Lbs. kg	
Wide Visible Mast (V)	98 2500	68 1745		132 3350		4.3 110	3	5	3800 1700
	106 2700	72 1845		140 3550		4.3 110	3	5	3800 1700
	118 3000	78 1995		151 3850		4.3 110	3	5	3800 1700
	130 3300	84 2145		163 4150		4.3 110	3	5	3800 1700
	138 3500	88 2245		171 4350		4.3 110	3	5	3800 1700
	145 3700	95 2405		179 4550		4.3 110	3	5	3800 1700
	157 4000	101 2555		191 4850		4.3 110	3	5	3800 1700
	177 4500	112 2845		210 5350		4.3 110	3	5	3660 1660
Wide Visible Mast (SV)	98 2500	68 1745		132 3350		15 390	3	5	3800 1700
	106 2700	72 1845		140 3550		15 390	3	5	3800 1700
	118 3000	78 1995		151 3850		15 390	3	5	3800 1700
	130 3300	84 2145		163 4150		15 390	3	5	3800 1700
	138 3500	88 2245		171 4350		15 390	3	5	3800 1700
	145 3700	95 2405		179 4550		20 510	3	5	3800 1700
	157 4000	101 2555		191 4850		20 510	3	5	3800 1700
	177 4500	112 2845		210 5350		20 510	3	5	3660 1660
Wide Visible Full-Free Lift 2-Stage Mast (FV)	197 5000	122 3095		230 5850		20 510	3	5	3460 1570
	118 3000	78 1995	142 3615	151 3850	46 1180	45 1145	3	5	3800 1700
	130 3300	84 2145	154 3915	163 4150	52 1330	51 1295	3	5	3800 1700
	138 3500	88 2245	162 4115	171 4350	56 1430	55 1395	3	5	3800 1700
	145 3700	95 2405	170 4315	179 4550	63 1590	61 1555	3	5	3800 1700
	157 4000	101 2555	181 4615	191 4850	68 1740	67 1705	3	5	3800 1700

7FBRS20 • Mast Specifications

Mast Type	Maximum Fork Height	Overall Height			Free Lift		Tilt Range		Load Capacity at 24 in./600 mm Load Centre Lbs. kg
		Lowered	Extended		Without Load Backrest	With Standard Load Backrest	Down deg	Up deg	
			Without Load Backrest	With Standard Load Backrest					
in. mm	in. mm	in. mm	in. mm	in. mm	in. mm	deg	deg	Lbs. kg	
Wide Visible Mast (V)	138 3500	88 2245		171 4350		4.3 110	3	5	3830 1740
	145 3700	95 2405		179 4550		4.3 110	3	5	3830 1740
	157 4000	101 2555		191 4850		4.3 110	3	5	3830 1740
	177 4500	112 2845		210 5350		4.3 110	3	5	3830 1740
	197 5000	122 3095		230 5850		4.3 110	3	5	3830 1740
Wide Visible Mast (SV)	138 3500	88 2245		171 4350		15 390	3	5	3830 1740
	145 3700	95 2405		179 4550		20 510	3	5	3830 1740
	157 4000	101 2555		191 4850		20 510	3	5	3830 1740
	177 4500	112 2845		210 5350		20 510	3	5	3830 1740
Wide Visible Full-Free Lift 2-Stage Mast (FV)	197 5000	122 3095		230 5850		20 510	3	5	3830 1740
	138 3500	88 2245	162 4115	171 4350	56 1430	55 1395	3	5	3830 1740
	145 3700	95 2405	170 4315	179 4550	63 1590	61 1555	3	5	3830 1740
Wide Visible Full-Free Lift 3-Stage Mast (FSV)	157 4000	101 2555	181 4615	191 4850	68 1740	67 1705	3	5	3830 1740
	169 4300	77 1965		203 5150		44 1115	3	5	3830 1740
	177 4500	80 2035		210 5350		46 1185	3	5	3830 1740
	185 4700	83 2115		218 5550		50 1265	3	5	3830 1740
	197 5000	87 2215		230 5850		53 1365	3	5	3830 1740
	216 5500	93 2375		250 6350		60 1525	3	5	3550 1600
	236 6000	101 2565		269 6850		67 1715	3	5	3370 1530

2,000 to 5,700 lbs. 907 to 2,600 kg • Mast Specifications

7FBR25 • Mast Specifications

Mast Type	Maximum Fork Height	Overall Height			Free Lift		Tilt Range		Load Capacity at 24 in./600 mm Load Centre Lbs. kg
		Lowered	Extended		Without Load Backrest	With Standard Load Backrest	Down deg	Up deg	
			Without Load Backrest	With Standard Load Backrest					
in. mm	in. mm	in. mm	in. mm	in. mm	in. mm	deg	deg	Lbs. kg	
Wide Visible Mast (V)	98 2500	68 1745		132 3350		4.3 110	3	5	4800 2180
	106 2700	72 1845		140 3550		4.3 110	3	5	4800 2180
	118 3000	78 1995		151 3850		4.3 110	3	5	4800 2180
	130 3300	84 2145		163 4150		4.3 110	3	5	4800 2180
	138 3500	88 2245		171 4350		4.3 110	3	5	4800 2180
	145 3700	95 2405		179 4550		4.3 110	3	5	4800 2180
	157 4000	101 2555		191 4850		4.3 110	3	5	4800 2180
	177 4500	112 2845		210 5350		4.3 110	3	5	4600 2100
	197 5000	122 3095		230 5850		4.3 110	3	5	4430 2000
Wide Visible Mast (SV)	98 2500	68 1745		132 3350		15 390	3	5	4800 2180
	106 2700	72 1845		140 3550		15 390	3	5	4800 2180
	118 3000	78 1995		151 3850		15 390	3	5	4800 2180
	130 3300	84 2145		163 4150		15 390	3	5	4800 2180
	138 3500	88 2245		171 4350		15 390	3	5	4800 2180
	145 3700	95 2405		179 4550		20 510	3	5	4800 2180
	157 4000	101 2555		191 4850		20 510	3	5	4800 2180
	177 4500	112 2845		210 5350		20 510	3	5	4600 2100
	197 5000	122 3095		230 5850		20 510	3	5	4430 2000

7FBR25 • Mast Specifications

Mast Type	Maximum Fork Height	Overall Height			Free Lift		Tilt Range		Load Capacity at 24 in./600 mm Load Centre Lbs. kg
		Lowered	Extended		Without Load Backrest	With Standard Load Backrest	Down deg	Up deg	
			Without Load Backrest	With Standard Load Backrest					
in. mm	in. mm	in. mm	in. mm	in. mm	in. mm	deg	deg	Lbs. kg	
Wide Visible Mast (V)	138 3500	88 2245		171 4350		4.3 110	3	5	4800 2180
	145 3700	95 2405		179 4550		4.3 110	3	5	4800 2180
	157 4000	101 2555		191 4850		4.3 110	3	5	4800 2180
	177 4500	112 2845		210 5350		4.3 110	3	5	4800 2180
	197 5000	122 3095		230 5850		4.3 110	3	5	4800 2180
Wide Visible Mast (SV)	138 3500	88 2245		171 4350		15 390	3	5	4800 2180
	145 3700	95 2405		179 4550		20 510	3	5	4800 2180
	157 4000	101 2555		191 4850		20 510	3	5	4800 2180
	177 4500	112 2845		210 5350		20 510	3	5	4800 2180
	197 5000	122 3095		230 5850		20 510	3	5	4800 2180
Wide Visible Full-Free Lift 2-Stage Mast (FV)	130 3300	84 2145	154 3915	163 4150	52 1330	51 1295	3	5	4800 2180
	138 3500	88 2245	162 4115	171 4350	56 1430	55 1395	3	5	4800 2180
	145 3700	95 2405	170 4315	179 4550	63 1590	61 1555	3	5	4800 2180
	157 4000	101 2555	181 4615	191 4850	68 1740	67 1705	3	5	4800 2180
Wide Visible Full-Free Lift 3-Stage Mast (FSV)	169 4300	77 1965		203 5150		44 1120	3	5	4800 2180
	177 4500	80 2035		210 5350		47 1190	3	5	4800 2180
	185 4700	83 2115		218 5550		50 1270	3	5	4800 2180
	197 5000	87 2215		230 5850		54 1370	3	5	4800 2180
	216 5500	93 2375		250 6350		60 1530	3	5	4320 1960
	236 6000	101 2565		269 6850		68 1720	3	5	4030 1830

2,000 to 5,700 lbs. 907 to 2,600 kg • Mast Specifications

7FBR30 • Mast Specifications

Mast Type	Maximum Fork Height	Overall Height			Free Lift		Tilt Range		Load Capacity at 24 in./600 mm Load Centre Lbs. kg
		Lowered	Extended		Without Load Backrest	With Standard Load Backrest	Down deg	Up deg	
			Without Load Backrest	With Standard Load Backrest					
in. mm	in. mm	in. mm	in. mm	in. mm	in. mm				
Wide Visible Mast (V)	98 2500	68 1745		136 3450	5.3 135		3	5	5770 2600
	106 2700	72 1845		144 3650	5.3 135		3	5	5770 2600
	118 3000	78 1995		155 3950	5.3 135		3	5	5770 2600
	130 3300	84 2145		167 4250	5.3 135		3	5	5770 2600
	138 3500	88 2245		175 4450	5.3 135		3	5	5770 2600
	145 3700	95 2405		183 4650	5.3 135		3	5	5770 2600
	157 4000	102 2595		195 4950	5.3 135		3	5	5770 2600
	177 4500	112 2845		214 5450	5.3 135		3	5	5570 2530
197 5000	122 3095		234 5950	5.3 135		3	5	5370 2440	
Wide Visible Mast (SV)	98 2500	68 1745		136 3450	14 365		3	5	5770 2600
	106 2700	72 1845		144 3650	14 365		3	5	5770 2600
	118 3000	78 1995		155 3950	14 365		3	5	5770 2600
	130 3300	84 2145		167 4250	14 365		3	5	5770 2600
	138 3500	88 2245		175 4450	14 365		3	5	5770 2600
	145 3700	95 2405		183 4650	14 365		3	5	5770 2600
	157 4000	102 2595		195 4950	14 365		3	5	5770 2600
	177 4500	112 2845		214 5450	14 365		3	5	5570 2530
197 5000	122 3095		234 5950	14 365		3	5	5370 2440	
Wide Visible Full-Free Lift 3-Stage Mast (FSV)	169 4300	83 2115		207 5250	46 1170		3	5	5770 2600
	177 4500	85 2165		214 5450	48 1220		3	5	5770 2600
	185 4700	87 2215		222 5650	50 1270		3	5	5460 2480
	197 5000	93 2375		234 5950	56 1430		3	5	5280 2400
	216 5500	101 2565		254 6450	67 1618		3	5	4600 2100
	236 6000	111 2815		273 6950	73 1868		3	5	4120 1870

NOTE: Height of standard load backrest is 37.4 in. (950 mm)

- Thanks to advanced technology and a **world-renowned production system**, Toyota lift trucks are known for their **quality, durability and reliability**.
- Whether you plan to purchase a single lift truck or add to your fleet, our team of **dealers specialize** in meeting your every need.
- **Toyota Material Handling, U.S.A.**, Inc. is the number one selling lift truck in North America.
- For over **40 years**, **Toyota** has built quality products and sold these products through quality dealers in the U.S. and Canada.
- Toyota lift trucks are backed by proven product support from an **industry-leading network of dealers** who offer a broad range of resources.
- When you combine this level of support with the **productivity, low maintenance and efficiency** of Toyota lift trucks, you receive one comprehensive, value-added package.
- For more information or to locate your authorized Toyota Industrial Equipment dealer, call **1-800-226-0009** or visit **www.toyotaforklift.ca**
- Most of the Toyota lift trucks sold in **North America** are manufactured at TIEM, a zero-landfill facility in Columbus, Indiana.
- The proud and dedicated Toyota staff in **Columbus, Indiana** are building what we consider the most advanced lift trucks available in the market today.

Some product features here-in are optional. Please contact your dealer for specifications.
Details of specifications are based on information available at time of printing and may change without notice.

